

## Greetings from Principal George Sumner

Dear Brothers and Sisters,

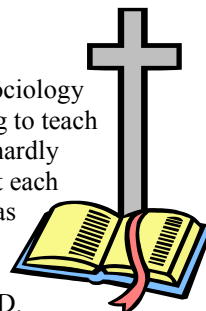
Greetings in Christ! By the time you read this, you will have already registered for courses via ROSI, or will be headed to your advisor to get some sage advice about doing so. You will have noticed that the courses you are signing up for are in distinct departments. We are accustomed to the cubbyholes marked "Old Testament," "New Testament," "Church History," "Theology" and "Pastoralia." However, no sooner have we settled on these divisions, than theological educators run off in pursuit of the holy grail of integration of the disciplines, which means we are less content with the boundaries than we seemed!

To understand how we came to cut the pie up this way, the best person to talk to is our own Alan Hayes, who is researching the history of theological education itself. Some of the distinctions have long precedents in Christian history - already in the Middle Ages commentary on the Scriptures preceded study of theology per se. Likewise books of pastoral direction and guidance can be found as far back as Gregory the Great. Still, the notion of distinct specialties is a modern invention highly influenced by modern ideas about history and science (this side of things goes under the label of "Berlin" in David Kelsey's work called "to Know God Truly", in contrast to the emphasis on formation and wisdom to which he gives the tag

"Athens"). Sociology has something to teach us here: it is hardly irrelevant that each department has its own professional guild, the Ph.D. serving as its initiation rite.

Why should we care? No one can read it all, and so it is a good thing to have people who know a great deal about one area of Christian reflection or another. Still the danger exists that the Bible will come to be seen as the provenance of the "Biblical People," and reference to it in other areas becomes a secondary addition. It is precisely in reaction against this tendency that we see the recent series of Biblical commentaries based

*(Continued on page 2)*



### SPECIAL POINTS OF INTEREST:

- *Wycliffe's Wednesdays: The Long Purple Line*
- *John W. Graham Library - Information Sessions*
- *Chapel Schedule for this week*
- *Registrar's Reminders*
- *Community Dinner & Twoonie Lunches*
- *Mandatory Chapel Training*

## HOW TO ACCESS WEB ENHANCED COURSES @ WYCLIFFE

All Basic Degree courses at Wycliffe College have an element of web enhancement. Wycliffe has partnered with the University of Toronto to provide each course with a website where a variety of resources and materials

are made available. These can include online discussion forums, student grades, course syllabi, information, and documents, as well as instructor details and contact information. This allows for active learning to

continue between classes.

### How To Activate Your Student Account

To activate your student account for each course that you are taking, follow

*(Continued on page 2)*

### Attention M.Div. Students...

*If you are looking for a Diocese and would like to meet with Bishop Burton to discuss possibilities in Saskatchewan, please see Karen (Room 104) to set up an appointment for Wednesday.*

## Registrar's Reminders

### GO TRANSIT CARDS

If you are a full time student and use the GO Train to commute to the College, you are eligible to receive a student identification card. Application forms are available from my office.

### SAC EXTENDED HEALTH & DENTAL COVERAGE

All full time students are automatically enrolled in the SAC Health and Dental Plan. you have been charged \$105.94 per semester through your fees. If you have coverage through your place of

employment or are on the plan of a parent, you are eligible to opt out of the health portion. Any student may opt out of the dental portion of the plan. Starting September 12, 2005 until October 14, 2005, you may opt out online at

[www.health.ca/students](http://www.health.ca/students)

During the same period you may add a spouse or dependent children to the plan by visiting the SAC office at 12 Hart House Circle. For more information see the SAC website at

[www.sac.utoronto.ca](http://www.sac.utoronto.ca)

Brochures are also available at the Front Desk of the College.

### REFUND DEADLINES

Remember to note the refund deadlines that are listed on the "Student Account Information" sheet that you received with your invoice.

### ADD DEADLINE

The last day to ADD a course on ROSI for the fall semester is Friday, September 23, 2005.

Marie Soderlund, Registrar

## Editorial (cont.)

*(Continued from page 1)*

on the Church Fathers, or the series of commentaries written by theologians without over much concern about historical critical worries. The solutions may be open to critique, but they point up a real problem.

The "Word of God endures": such is the motto of Wycliffe. Unlike many schools we share beneath our theological differences, a basic commitment to the words of

Scripture as themselves gifts from God with the power to convey the presence and intention of the Word of God, Jesus Christ. So, shouldn't we understand all of our study here as a study of the Word of God. the "Biblical people" consider the texts themselves, historians look at its transmission and the range of interpretations it has inspired, and theologians ask and answer vexed questions about the Word, and how different textual words can cohere with one another. The Pastoral think

about how that Word is proclaimed, enacted in sacramental enactment, and brought to bear on personal perplexities. The Word of God, heard in all its Biblical words, interpreted by God's people across centuries and continents, conveyed in the traditional practices of the Church: that is the one, expansive, variegated subject of your study. We would do well as a community to remind one another of this fact when we get "parochial" in the bad sense.

## CCNet (cont.)

*(Continued from page 1)*

these simple steps.

1. Go to [www.ccnet.utoronto.ca](http://www.ccnet.utoronto.ca)
2. At the bottom of the page, go to "Access CCNet Courses".
3. Choose "List By Department" and "20059: Beginning September 2005" and then "Continue".
4. Scroll down to "[Wycliffe College - Toronto School of Theology](http://www.wycliffecollege-toronto.ca)"

5. From there select the course you want. For example, [20059/wyb1008hf](http://www.wycliffecollege-toronto.ca/20059/wyb1008hf) Introduction to the Old Testament I.

6. To set up a student account in the course select "Students" from the menu on the left. As a first time user of the site, select "Register" and enter the information requested. Because of spam filtering, it is recommended that you use a University of Toronto email account. (If you do not yet have one, create it here <https://www.utorid.utoronto.ca>)

Bookmark your individual course website and use your login and password to access it subsequently. Follow the same procedure for other courses you are taking.

You should find that your web enhanced course is secure, reliable, extremely fast, and user friendly.

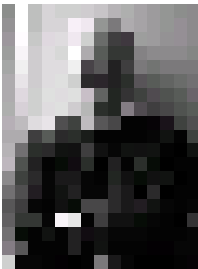


# SEAD CONFERENCE 2005

September 22–23, 2005 at Wycliffe College

---

## “Theology and Discipleship”



Dr. John Webster

King's College, University of Aberdeen

Professor John Webster teaches Systematic Theology at King's College, University of Aberdeen. He was educated at the University of Cambridge and has taught at the University of Durham, Wycliffe College (1986-1996) and the University of Oxford. His most recent books include: *Holy Scripture: A Dogmatic Sketch*, *Holiness*, and *Barth's Early Theology* (forthcoming). His areas of particular interest include the doctrine of divine attributes, the theology of Karl Barth and the nature and interpretation of Scripture.

Dr. Michael Knowles

McMaster Divinity College

Dr. Michael Knowles is the Associate Professor of Preaching at McMaster Divinity College in Hamilton, Ontario. He is an ordained minister with the Anglican Church of Canada and teaches courses in both Christian ministry and biblical studies in a way that integrates ministry application with sound biblical exegesis.

---

The conference will focus on the call to discipleship, and on the one who constitutes that call, Jesus Christ, who is himself the grace and command of God in person. The conference will also consider the shape or direction of discipleship in response to the summons of Jesus. The questions to be asked are: Who is Jesus Christ? Who are those whom he calls to follow him? And how are we to characterize the life to which he calls them?

The SEAD conference starts at 7:30pm on Thursday, September 22 and runs until 1pm on Friday, September 23.

**Registration Cost: \$35 non-students, \$10 students**

**For more information:**

**Tel: 416-946-3524, [wycliffe.development@utoronto.ca](mailto:wycliffe.development@utoronto.ca)**

**Register online [www.wycliffecollege.ca](http://www.wycliffecollege.ca), or**

**Contact Christina Holmes in the Development Office**

## Registering for a Summative Exercise/Thesis

If you are registering for a thesis or summative exercise this year, please download the Reading & Research course registration form from our website (click on "Current Students", then "Registrar", then "Forms & Documents") or pick it up from Marie's office - Room 226. This form needs to be completed together with your supervisor and returned to the Registrar's office by SEPTEMBER 22ND at the latest.

Marie Soderlund, Registrar

### HELP NEEDED...

TST professor and spouse looking for responsible person to provide part-time child care in our home. Flexible hours, easily accessible from campus by TTC. Please contact

joseph.mangina@utoronto.ca

### ATTENTION ALL M.DIV. STUDENTS...

Please make sure to bring your completed Police Check forms in to Marie as soon as possible.

Dear Wycliffe

Community,

*Thank you for all your kind expressions of support on the occasion of the death of my father. They were a reminder to me of our shared hope on the resurrection.*

Sincerely,

*Stephanie Hodgkins*

## The Wycliffe Mentoring Program

*the Wycliffe Mentoring Program* offers all Wycliffe students the opportunity to meet with a spiritual mentor/director once a month for a private hour-long session. This is a chance for you to talk with someone about your spiritual journey and your relationship with God.

Come out to our Spiritual Mentor Introduction Evening, hear a bit about the background of our mentors, and chat with them

afterwards.

**Spiritual Mentor  
Introduction Evening  
Tuesday, September 20  
The Reading Room  
7:00 - 9:00 p.m.**

If you find someone who is a good fit for you, you can meet with that person once a month from September through April. Wycliffe College provides each

mentor with an honourarium, so there is no cost involved for the student.

There will be biographies of the mentors available in the Reading Room on Tuesday at 4:30 p.m. preceding the evening. Please contact Mark Regis - Rm. 228 or

wycliffe.admissions@utoronto.ca

- if you have any questions about the program.

## From the Front Desk...

### WEDNESDAY COMMUNITY DINNER

As a member of the Wycliffe Community, every Wednesday after Eucharist you are invited to eat dinner with the Community. If you would like to attend, you must sign up at the Front Desk before 11:00 a.m. Wednesday. You are welcome to bring your spouse and children free of charge. Meal tickets for others can be purchased at the Front Desk for \$8.00.

Please note that the Wycliffe Resi-

dents are graciously sharing their dining hall with us. The majority of our residents are graduate students in a variety of faculties at University of Toronto. This is a wonderful opportunity to get to know members of the greater Wycliffe Community.



### TWOONIE LUNCHES

Wycliffe College offers a subsidized lunch for all Wycliffe students, residents,

faculty, and staff. Lunch is served at 1:00 p.m., Monday through Thursday. You may purchase a lunch card at the Front Desk for \$10 or \$20. Lunches are \$4.00 for those outside the Wycliffe Community.

### LOCKERS

Day students' lockers (located outside the Day Student Lounge) are available for Wycliffe student use. Lockers are available at the



## John W. Graham Library - Instructional Sessions

The Graham Library is holding one-hour Instructional Sessions on Library Research to help you get a head start on your readings and assignments.

All sessions are held in the Electronic Classroom of the Graham Library and are "drop in" no sign-up is required. If you would like further information on any, or all, of the sessions please call 416-978-5851.

### FINDING A BOOK

Wed., Sept. 14 & 21 - 11:00 a.m. - 12:00 noon.

Thurs., Sept. 15 & 22 - 9:00 a.m. - 10:00 a.m.

### FINDING JOURNAL ARTICLES

Wed., Sept. 28 - 11:00 a.m. - 12:00 noon.

Thurs., Sept. 29 - 9:00 a.m. - 10:00 a.m.

### FINDING REFERENCE SOURCES

Thurs., Sept. 29 - 11:00 a.m. - 12:00 noon.

Wed., Oct. 5 - 11:00 a.m. - 12:00 noon

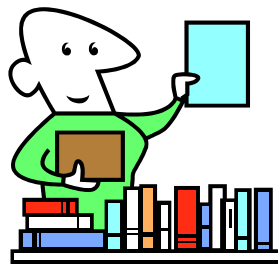
### FINDING INTERNET SOURCES

Thurs., Oct. 6 - 11:00 a.m. - 12:00 noon.

Thurs., Oct. 13 - 9:00 a.m. - 10:00 a.m.

If you have any other Library questions, please contact Prof. Tom Power, Wycliffe's Librarian at 416-946-3526 or via e-mail at

thomas.power@utoronto.ca



## Principal's Word

This fall, we as a faculty want to return to a custom at Wycliffe of a prior era, which is also a long-standing tradition within Anglicanism. At Ember-tide ordinands were expected to write a letter to their Bishops in which they would tell them of their spiritual, theological and personal condition,

*Old traditions  
are being revived  
at Wycliffe.*

and asking for counsel or prayers where appropriate. It was an opportunity to speak to one's Bishop as one's father or mother in God (rather than as primarily and administrator or a roadblock to career-goals.

September  
14th, Holy Cross Day,  
is one such Ember day.

All who are officially in a diocesan ordination process are asked to write such a letter within the week following that day, and to let my Assistant, Karen, know you have done so.

Peace,

The Rev. Canon Dr. George Sumner

(Karen's Office is Room 104)



### Calling All Musicians ...

We are looking for musicians to play in the Chapel at Wycliffe. We are looking for pianists and/or organists to play during Morning Prayer. We are also looking for people interested in playing praise and worship music for Wednesday Eucharists. Please speak to Karen in Room 104 if you are interested.



## Join a College Mission this Fall!

St. Paul's, Dunnville, ON

October 20 - 23

St. Barnabas, Waswanipi, QC

October 18 - 20

If you love people and love the Gospel and want to help connect the two this could be for you.

For more details, see flyer at the Front Desk, or contact John Bowen at 416-946-3534 or john.bowen@utoronto.ca

# Chapel News & Notes

<b>This Week's Chapel Schedule</b>	<b>Monday</b>	<b>Tuesday</b>	<b>Wednesday</b>	<b>Thursday</b>	<b>Friday</b>
	8:30—M.P.	7:30—WBB 8:30 - M.P.	8:30—M.P.	8:30—M.P.	8:30—M.P.
	5:30—E.P.	5:30—E.P.	4:45 - Eucharist	5:30—E.P.	

## *Who's doing what in Chapel this week...*

<b>Day</b>	<b>Morning Prayer/WBB</b>	<b>Evening Prayer/Eucharist</b>
<b>Monday</b>	Cameron Burns	Colleen Sanderson
<b>Tuesday</b>	WBB - The Rev. Travis Enright MP - Thomas Brauer	Glen Taylor
<b>Wednesday</b>	Kelly Cooper	Sub-Deacon - Ryan Sim Server - Matt Kydd Intercessions - Karen Hatch Cantor - The Rev. Maddie Urion OT Reader - Nick Trussell NT Reader - Sheila Van Zandwyk Greeter - Donna Willer Children's - Quinn Strikwerda/ Colleen Sanderson Chancel - Nola Crewe Co-Sacristans - The Rev. Travis Enright & Karen Hatch Warden - The Rev. Mark Andrews
<b>Thursday</b>	Preacher - David Reed MP - Karen Hatch	Nick Trussell
<b>Friday</b>	Quinn Strikwerda	Jasmine Shantz

**This week's Preacher and Celebrant...**  
The Rt. Rev. Anthony Burton  
(Diocese of Saskatchewan)

### **Mandatory Chapel Training**

Wed., Sept. 14th -  
1:30-3:00 p.m. -  
"Daily Offices"

Wed., Sept. 21st &  
Sept. 28th -  
1:30-3:00 p.m. -  
"Communion/Music"

All M.Div. students  
are expected to  
attend the above  
training sessions.



*For those leading Morning Prayer - please speak to either Cameron Burns or Colleen Sanderson about music and hymn selection for this week.*



# SEPTEMBER 2005

Sun	Mon	Tue	Wed	Thu	Fri	Sat
				1	2	3 Moving In
4 Moving In	5 LABOUR DAY Moving In	6 ORIENTATION Meals Begin	7 ORIENTATION Opening Assembly & Chapel	8 ORIENTATION BBQ	9 ORIENTATION	10 College Retreat
11 College Retreat	12 \$2.00 Lunches & Classes Begin	13	14 WE - Bishop Anthony Burton	15 Field Ed Supervisors	16	17 Board/Faculty Retreat
18	19	20 Spiritual Mentors Evening	21 WE - Rev. Ravi Kalison	22 SEAD	23 SEAD	24 Diploma in Lay Ministry
25	26	27	28 WE - Rev. Canon Kim Beard	29	30	

## Wednesday Events

*This term there is a focus on "Missions" through our Wednesday Events. The Events take place each Wednesday afternoon at 3:00 p.m. in the Principal's Lodge. All members of the Wycliffe Community are invited for tea & sherry, followed by presentation.*

*Here is a schedule:*

*Sept. 14th - Bishop Anthony Burton (Sask.) - "Getting the*

*Most out of Theological Education"*

*Sept. 21st - Rev. Ravi Kalison - "Ministry to Tamils"*

*Sept. 28th - Rev. Canon Kim Beard - "Anglicans in Service"*

*Oct. 5th - Quiet Day*

*Oct. 12th - Debate*

*Oct. 26th - Peter Misiaszek (Diocese of Toronto) - "Stewardship" (joint with*

*Trinity College students - here)*

*Nov. 2nd - Rev. Peter John - "Ministry to Sudanese"*

*Nov. 9th - Rev. Andrew Wesley - "Urban Native Ministries"*

*Nov. 16th - David Novak - Book Launch*

*Nov. 23rd - Rev. Matthias Der - "Ministry to Chinese"*

*Nov. 30th - "Town Hall"*

Treasured Past/Dynamic Future

Wycliffe College  
5 Hoskin Avenue  
Toronto, Ontario M5S 1H7  
Phone: 416-946-3521

Email: karen.baker.bigauskas@utoronto.ca

We're on the web  
[www.wycliffecollege.ca](http://www.wycliffecollege.ca)



## Wycliffe's Wednesdays: The Long Purple Line

Wycliffe is proud to announce a plethora of visiting bishops this fall. Through out the fall term we have bishops celebrating and preaching at Wednesday Eucharist all but one week. We are also blessed to have the new Archbishop of the Province of Ontario - The Most Rev. Caleb Lawrence visiting in November.

Here is the schedule:

Sept. 14th - The Rt. Rev. Anthony Burton - Saskatchewan

Sept. 21st - The Rt. Rev. Michael Bedford-Jones -

Toronto, York-Scarborough

Sept. 28th - The Rt. Rev. George Elliott - Toronto, York-Simcoe

Oct. 5th - The Rt. Rev. Ralph Spence - Niagara

Oct. 12th - Preacher - John Bowen, Celebrant - The Rt. Rev. Peter Mason - ret. Ontario

Oct. 26th - The Rt. Rev. Andrew Atagotaaluk - Arctic



Nov. 2nd - The Rt. Rev. Bruce Howe - Huron

Nov. 9th - The Most Rev. Caleb Lawrence - Moosonee & Prov. of Ontario

Nov. 16th - Bishop Peter Beckwith -

Springfield, IL.

Nov. 23rd - The Rt. Rev. Philip Poole - Toronto, Credit Valley

Nov. 30th - The Rt. Rev. George Bruce - Ontario

## Maintenance Requests

Attention Residents!!!

If you notice repairs or maintenance items that need to be completed around the Wycliffe Campus, please make sure to notify the Maintenance Department using the "Wycliffe College

Maintenance Request" form, available at the Front Desk (a copy is below). Please note that this form is the only accepted form for making repair requests.

David Durance  
Building Superintendent