

GOOD NEWS FOR PEOPLE WHO ARE SKEPTICAL ABOUT THINGS LIKE THE RESURRECTION OF JESUS

Just when you think you're about to be zapped by God, He does something surprising like understand you -- even give you a hug.

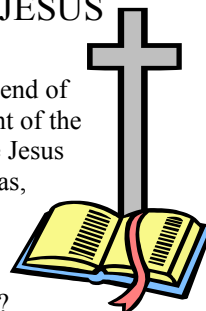
What follows is a word for skeptics. Are you a theology student with a skeptical bent? Or are you a graduate student in residence who respects the faith of other theological students but who simply doesn't believe this Jesus stuff? If so, read on!

First, Jesus understands our skepticism. He even honors it by taking it seriously. This is evident in John's account of Jesus' appearance to his disciples after his resurrection. (John 20, vv. 24-29). There we encounter the famous doubting Thomas who was freed from his doubt

by actually seeing Jesus after he rose from the dead. But where does that leave us? If Thomas the skeptic received the proof he required, we modern readers don't seem much better off because we, unlike John, didn't see Jesus in the days after his resurrection and before his ascension back to heaven. Thankfully, we have good evidence for the resurrection in the historically credible testimony of the gospels themselves. But the gospel writer is sympathetic to us modern day Thomas's who have no risen body to touch. In fact, so sympathetic is John that he gives us -- yes, us -- a place right in the gospel resurrection story itself! (This was something even Simon Peter did not merit, except indirectly.) I am re-

ferring to the end of John's account of the Gospel where Jesus says to Thomas, "Have you believed because you have seen me? Blessed are those who have not seen and yet have come to belief." (Compare John 17:20 where Jesus actually prays that we might come to believe through the testimony of the apostles.) Moreover, in John's chronology of things, although we were not there on Easter Sunday, we are there the very next Sunday! (See John 20:26.) John's Jesus, then, dignifies our skepticism by acknowledging it, by praying for us, and by blessing us as we rise above it. (This is not to say the skepticism is a

(Continued on page 2)



SPECIAL POINTS OF INTEREST:

- *Wycliffe's Wednesdays: The Long Purple Line*
- *John W. Graham Library - Information Sessions*
- *Chapel Schedule for this week*
- *Registrar's Reminders*
- *Community Dinner & Twoonie Lunches*
- *Mandatory Chapel Training*

HOW TO ACCESS WEB ENHANCED COURSES @ WYCLIFFE

All Basic Degree courses at Wycliffe College have an element of web enhancement. Wycliffe has partnered with the University of Toronto to provide each course with a website where a variety of resources and materials

are made available. These can include online discussion forums, student grades, course syllabi, information, and documents, as well as instructor details and contact information. This allows for active learning to

continue between classes.

How To Activate Your Student Account

To activate your student account for each course that you are taking, follow

(Continued on page 2)

All Anglican M.Div. students are reminded that Chapel attendance on days they are in the College is mandatory.

Registrar's Reminders, Marie Soderlund

GO TRANSIT CARDS

If you are a full time student and use the GO Train to commute to the College, you are eligible to receive a student identification card. Application forms are available from my office.

SAC EXTENDED HEALTH AND DENTAL COVERAGE

All full time students are automatically enrolled in the SAC Health and Dental Plan. you have been charged \$105.94 per semester through your fees. If you have coverage through your place of

employment or are on the plan of a parent, you are eligible to opt out of the health portion. Any student may opt out of the dental portion of the plan. Starting September 12, 2005 until October 14, 2005, you may opt out online at

www.health.ca/students

During the same period you may add a spouse or dependent children to the plan by visiting the SAC office at 12 Hart House Circle. For more information see the SAC website at

www.sac.utoronto.ca

Brochures are also available at the Front Desk of the College.

REFUND DEADLINES

Remember to note the refund deadlines that are listed on the "Student Account Information" sheet that you received with your invoice. The last day to drop an F course and receive a full refund is **September 25, 2005.**

ADD DEADLINE

The last day to ADD a course on ROSI for the fall semester is **Friday, September 23, 2005.**

Editorial (cont.)

(Continued from page 1)

Christian virtue -- far from it. It is to say that the Holy Spirit of God acknowledges skepticism, understands it, and seeks gently to help us beyond it to deeper faith in Him which is truly liberating.)

Second, although it is true that the skeptic cannot see the risen Jesus in the same way the disciples and others living at the time did, the modern-day Thomas can still genu-

inely see the risen Christ. How? In several empirical ways, but in each case ultimately by the same means - God. One way for is suggested by the disciples on the road to Emmaus in Luke's gospel who comment, "Were not our hearts burning within us while he was talking to us on the road, while he was opening the Scriptures to us? [Luke 24, v. 32]" Though obscure in the Greek, the word "burning" is far from obscure to countless Christians who, like the two on the Emmaus road,

have had their hearts "strangely warmed" during the exposition of Scripture or at other times. Whether then or now, that sense of warmth, Luke tells us, may be kindled within us by none other than the risen, real, living Christ. Another way the two on the Emmaus recognized Christ was "in the breaking of bread" (v. 35; compare v. 30-31). Here Luke intentionally uses the language of the Eucharist (Holy Communion) as a way of

(Continued on page 3)

CCNet (cont.)

(Continued from page 1)

these simple steps.

1. Go to www.ccnet.utoronto.ca
2. At the bottom of the page, go to "Access CCNet Courses".
3. Choose "List By Department" and "20059: Beginning September 2005" and then "Continue".
4. Scroll down to "[Wycliffe College - Toronto School of Theology](http://www.wycliffecollege-toronto.ca)"

5. From there select the course you want. For example, [20059/wyb1008hf](http://www.ccnet.utoronto.ca/20059/wyb1008hf) Introduction to the Old Testament I.

6. To set up a student account in the course select "Students" from the menu on the left. As a first time user of the site, select "Register" and enter the information requested. Because of spam filtering, it is recommended that you use a University of Toronto email account. (If you do not yet have one, create it here <https://www.utorid.utoronto.ca>)

Bookmark your individual course website and use your login and password to access it subsequently. Follow the same procedure for other courses you are taking.

You should find that your web enhanced course is secure, reliable, extremely fast, and user friendly.



Editorial (cont.)

(Continued from page 2)

pointing beyond the one-time experience of the two on the road who saw Christ in one physical way to the shared experience of all believers who at the Eucharist see Christ in another “physical” (and no less “real”) way. This suggests that Church is a good and important place for the skeptical Christian to continue to be.

Yet another way for skepticism to fade is when the Holy Spirit opens the eyes and minds of his followers -- whether skeptics or not -- to recognize Him and to discern the true meaning of the Scriptures as pointing to Him (vv. 31, 45).

This illumination of the eyes and the mind came to the disciples soon after his resurrection but became an especially powerful phenomenon when the Holy Spirit came upon the church in Acts 2. Indeed, by having access to this “power from on high,” the post-Pentecost Christian skeptic has a clear advantage over the pre-Pentecost followers of Jesus who saw him face-to-face only if they were lucky enough to be in the right place at the right time.

By God’s grace, skeptics, whether ourselves or others, can indeed be brought to a point of faith (or renewed faith). As He works in us and through us, skeptics can be brought to a point where, as in the

post-resurrection accounts, they spread the gospel, worship God exuberantly, and experience that “great joy” (v. 52) that only the gospel of the living Christ can bring. May this be the experience of us all, whether skeptics or not.

The Rev. Dr. Glen Taylor

FOUNDERS’ DAY

SUNDAY, OCTOBER 2, 2005

ST. JAMES CATHEDRAL

11:00 A.M.

All students are reminded they are expected to attend Founders’ Day at St. James Cathedral. The Rev. Dr. Ann Jarvis will be the Preacher. Students on Placement are excused in order to attend.

Chapel Reminders...

Mandatory Chapel Training

continues this week and next focusing on Communion and Music. Training is 1:30 p.m.-3:00 p.m. each week.

Chapel Attendance for all Anglican M.Div. students is mandatory each day you are in the College.

Music for Morning

Prayer - starting next week we will have 3 students available to play



music for Morning Prayer. Cameron Burns will play on Mondays & Wednesdays, Colleen Sanderson on Tuesdays & Fridays, and Imbi Kinnon will play on Thursdays. Karen Hatch will be sending their e-mails addresses

to you,
please
make sure
to cc
them
when



sending your order of service to Father Mark the week before your service. This gives them time to prepare and speak to you if they have any questions.

Service Outlines - Morning & Evening Prayer

- Please make sure you e-mail your service outline to Father Mark Andrews -

rector@stthomas.com

one week BEFORE you lead.

Local Church Directory

Looking For a Church Home?

Are you new to Toronto and looking for a church community to worship in or just interested in checking out some of the churches in the area?

If so, you are invited to check out our new "Church Directory". The Church Directory is a listing of churches in the area around Wycliffe.

It also includes some churches that are a little further away but that are frequently attended by students, staff and residents from Wycliffe. Each listing provides you with information regarding the denomination of the church, service times, contact information and a map to help point you in the right direction. If you are interested, we will also try to connect you with someone from Wycliffe who already

attends the church and could help give you further directions, show you around the church or just be a friendly face in the crowd.

Finding a church that "fits" can seem like a daunting task in a city as big as Toronto. Please allow us to do what we can to help you find a church where you can feel at home. Ask for a copy of the Church Directory at the Front Desk at Wycliffe

From the Front Desk - Community Meals at Wycliffe

WEDNESDAY

COMMUNITY DINNER

As a member of the Wycliffe Community, every Wednesday after Eucharist you are invited to eat dinner with the Community. If you would like to attend, you must sign up at the Front Desk before 11:00 a.m. Wednesday. You are welcome to bring your spouse and children free of charge. Meal tickets for others can be purchased at the Front

Desk for \$8.00.

Please note that the Wycliffe Residents are graciously sharing their dining hall with us. The majority of our residents are graduate students in a variety of faculties at University of Toronto. This is a wonderful opportunity to get to know members of the greater Wycliffe Community.

TWOONIE LUNCHES

Wycliffe College offers a subsidized lunch for all Wycliffe students, residents, faculty, and staff. Lunch is served at 1:00 p.m., Monday through Thursday. You may purchase a lunch card at the Front Desk for \$10 or \$20. Lunches are \$4.00 for those outside the Wycliffe Community.



SEAD CONFERENCE 2005

September 22–23, 2005 at Wycliffe College

“Theology and Discipleship”

Dr. John Webster

King's College, University of Aberdeen

Professor John Webster teaches Systematic Theology at King's College, University of Aberdeen. He was educated at the University of Cambridge and has taught at the University of Durham, Wycliffe College (1986-1996) and the University of Oxford. His most recent books include: *Holy Scripture: A Dogmatic Sketch*, *Holiness*, and *Barth's Early Theology* (forthcoming). His areas of particular interest include the doctrine of divine attributes, the theology of Karl Barth and the nature and interpretation of Scripture.

Dr. Michael Knowles

McMaster Divinity College

Dr. Michael Knowles is the Associate Professor of Preaching at McMaster Divinity College in Hamilton, Ontario. He is an ordained minister with the Anglican Church of Canada and teaches courses in both Christian ministry and biblical studies in a way that integrates ministry application with sound biblical exegesis.

The conference will focus on the call to discipleship, and on the one who constitutes that call, Jesus Christ, who is himself the grace and command of God in person. The conference will also consider the shape or direction of discipleship in response to the summons of Jesus. The questions to be asked are: Who is Jesus Christ? Who are those whom he calls to follow him? And how are we to characterize the life to which he calls them?

The SEAD conference starts at 7:30pm on Thursday, September 22 and runs until 1pm on Friday, September 23.

Registration Cost: \$35 non-students, \$10 students

For more information:

Tel: 416-946-3524, wycliffe.development@utoronto.ca

Register online www.wycliffecollege.ca, or

Contact Christina Holmes in the Development Office

More Registrar's Reminders...

Registering for a Summative Exercise/Thesis

If you are registering for a thesis or summative exercise this year, please download the Reading & Research course registration form from our website (click on "Current Students", then "Registrar", then "Forms & Documents") or pick it up from Marie's office - Room 226. This form needs to be completed together with your supervisor and returned to the Registrar's office by **SEPTEMBER 22ND** at the latest.

Personal Information Forms

If you have not already done so, please return your Personal Information Form this week. They can be put in Marie Soderlund's box at the Front Desk.

Marie Soderlund, Registrar

ATTENTION ALL M.DIV. STUDENTS...

Please make sure to bring your completed Police Check forms in to Marie as soon as possible.

HELP NEEDED...

TST professor and spouse looking for responsible person to provide part-time child care in our home. Flexible hours, easily accessible from campus by TTC. Please contact

joseph.mangina@utoronto.ca

The Wycliffe Mentoring Program

The Wycliffe Mentoring Program offers all Wycliffe students the opportunity to meet with a spiritual mentor/director once a month for a private hour-long session. This is a chance for you to talk with someone about your spiritual journey and your relationship with God.

Come out to our Spiritual Mentor Introduction Evening, hear a bit about the background of our mentors, and chat with them

afterwards.

**Spiritual Mentor
Introduction Evening
Tuesday, September 20
The Reading Room
7:00 - 9:00 p.m.**

If you find someone who is a good fit for you, you can meet with that person once a month from September through April. Wycliffe College provides each mentor with an honourarium, so there is no cost involved for

the student.

There will be biographies of the mentors available in the Reading Room on Tuesday at 4:30 p.m. preceding the evening. Please contact Mark Regis - Rm. 228 or

wycliffe.admissions@utoronto.ca

- if you have any questions about the program.

More From the Front Desk...

Student Mailboxes

All Wycliffe Day Students have mailboxes in the coat-room/hallway leading to the Administration Wing (provided that the student is at Wycliffe on a regular basis). Basic Degree student boxes are brown; Advanced Degree boxes are grey. Lists of students and their box # are posted beside the appropriate set of boxes.



PLEASE NOTE THE BOXES ARE UNDER THE NUMBER.

Lockers

Day Student lockers (located outside the Day Student Lounge in the basement) are available for Wycliffe student use. Lockers are available at the Front Desk with a \$5.00 deposit.



Front Desk Hours

Monday - Friday
8:00 a.m. - 8:00 p.m.
Except when classes run later.

Have Questions?

If you have any questions about how things work, or who to talk to at Wycliffe, our Front Desk staff, headed by Meg Farrell, will be happy to help you find the answers you are looking for.

John W. Graham Library - Instructional Sessions

The Graham Library is holding one-hour Instructional Sessions on Library Research to help you get a head start on your readings and assignments.

All sessions are held in the Electronic Classroom of the Graham Library and are "drop in" no sign-up is required. If you would like further information on any, or all, of the sessions please call 416-978-5851.

FINDING A BOOK

Wed., Sept. 14 & 21 - 11:00 a.m. - 12:00 noon.

Thurs., Sept. 15 & 22 - 9:00 a.m. - 10:00 a.m.

FINDING JOURNAL ARTICLES

Wed., Sept. 28 - 11:00 a.m. - 12:00 noon.

Thurs., Sept. 29 - 9:00 a.m. - 10:00 a.m.

FINDING REFERENCE SOURCES

Thurs., Sept. 29 - 11:00 a.m. - 12:00 noon.

Wed., Oct. 5 - 11:00 a.m. - 12:00 noon

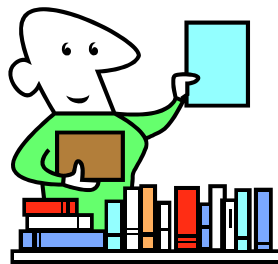
FINDING INTERNET SOURCES

Thurs., Oct. 6 - 11:00 a.m. - 12:00 noon.

Thurs., Oct. 13 - 9:00 a.m. - 10:00 a.m.

If you have any other Library questions, please contact Prof. Tom Power, Wycliffe's Librarian at 416-946-3526 or via e-mail at

thomas.power@utoronto.ca



Principal's Word

This fall, we as a faculty want to return to a custom at Wycliffe of a prior era, which is also a long-standing tradition within Anglicanism. At Ember-tide ordinands were expected to write a letter to their Bishops in which they would tell them of their spiritual, theological and personal condition,

*Old traditions
are being revived
at Wycliffe.*

and asking for counsel or prayers where appropriate. It was an opportunity to speak to one's Bishop as one's father or mother in God (rather than as primarily and administrator or a roadblock to career-goals).

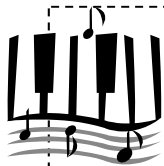
September
14th, Holy Cross Day,
is one such Ember day.

All who are officially in a diocesan ordination process are asked to write such a letter within the week following that day, and to let my Assistant, Karen, know you have done so.

Peace,

The Rev. Canon Dr. George Sumner

(Karen's Office is Room 104)



Calling All Musicians ...

We are looking for musicians to play in the Chapel at Wycliffe. We are looking for pianists and/or organists to play during Morning Prayer. We are also looking for people interested in playing praise and worship music for Wednesday Eucharists. Please speak to Karen in Room 104 if you are interested.



Attention All AD Students...

AD Seminar 2005-06
dates announced:

Wednesday, September 28th
Wednesday, October 13th
Wednesday, November 2nd
Wednesday, November 16th

For complete information please see attached sheet.

Chapel News & Notes

This Week's Chapel Schedule	Monday	Tuesday	Wednesday	Thursday	Friday
	8:30—M.P.	7:30—WBB 8:45 - M.P.	8:30—M.P.	8:30—M.P.	8:30—M.P.
	5:30—E.P.	5:30—E.P.	4:45 - Eucharist	5:30—E.P.	

Who's doing what in Chapel this week...

Day	Morning Prayer/WBB	Evening Prayer/Eucharist
Monday	Nola Crewe	Gary Graber
Tuesday	WBB - The Rev. Travis Enright MP - Joan Locke	Tom Power Alan Bennett
Wednesday	Colleen Sanderson	Sub-Deacon - Kelly Cooper Server - Nola Crewe Intercessions - Janet Weller Cantor - Cameron Burns OT Reader - Christine Watt NT Reader - Stephen Page Greeter - Jasmine Shantz Children's - Quinn Strikwerda/ Colleen Sanderson Chancel - Karen Hatch Co-Sacristans - The Rev. Travis Enright & Karen Hatch Warden - The Rev. Mark Andrews
Thursday	Preacher - Joe Mangina	Laura Goodwin
Friday	Dick Black	Sheila VanZandwyk

This week's Preacher and Celebrant...

The Rt. Rev.
Michael
Bedford-Jones
(Diocese of
Toronto)

Mandatory Chapel Training

Wed., Sept. 14th -
1:30-3:00 p.m. -
"Daily Offices"

Wed., Sept. 21st &
Sept. 28th -
1:30-3:00 p.m. -
"Communion/Music"

All M.Div. students
are expected to
attend the above
training sessions.



For those leading Morning Prayer - please speak to either Cameron Burns or Colleen Sanderson about music and hymn selection for this week. A new schedule will start next week.



SEPTEMBER/OCTOBER 2005

Sun	Mon	Tue	Wed	Thu	Fri	Sat
11 College Retreat	12 \$2.00 Lunches & Classes Begin	13	14 WE - Bishop Anthony Burton	15 Field Ed Supervisors	16	17 Board/Faculty Retreat
18	19 FRIENDS OF WYCLIFFE	20 Spiritual Mentors Evening	21 WE - Rev. Ravi Kalison	22 SEAD	23 SEAD	24 Diploma in Lay Ministry Open House
25	26	27	28 WE - Rev. Canon Kim Beard	29	30	1 OCTOBER
2 FOUNDERS' DAY AD Pizza Night	3 Fellowship of the Rings Luncheon	4	5 WE - Quiet Day	6	7	8
9	10 THANKSGIVING DAY	11	12 OPEN HOUSE WE - Debate	13	14	15

Wednesday Events

This term there is a focus on "Missions" through our Wednesday Events. The Events take place each Wednesday afternoon at 3:00 p.m. in the Principal's Lodge. All members of the Wycliffe Community are invited for tea & sherry, followed by presentation.

Here is a schedule:

Sept. 14th - Bishop Anthony Burton (Sask.) - "Getting the Most out of Theological Edu-

cation"

Sept. 21st - Rev. Ravi Kalison - "Ministry to Tamils"

Sept. 28th - Rev. Canon Kim Beard - "Anglicans in Service"

Oct. 5th - Quiet Day

Oct. 12th - Debate

Oct. 26th - Peter Misiaszek (Diocese of Toronto) - "Stewardship" (joint with Trinity College students - here)

Nov. 2nd - Rev. Peter John - "Ministry to Sudanese"

Nov. 9th - Rev. Andrew Wesley - "Urban Native Ministries"

Nov. 16th - David Novak - Book Launch

Nov. 23rd - Rev. Matthias Der - "Ministry to Chinese"

Nov. 30th - Kevin Martin - "Leadership in Tomorrow's Church"

Treasured Past/Dynamic Future

Wycliffe College
5 Hoskin Avenue
Toronto, Ontario M5S 1H7
Phone: 416-946-3521

Email: karen.baker.bigauskas@utoronto.ca



Wycliffe's Wednesdays: The Long Purple Line

Wycliffe is proud to announce a plethora of visiting bishops this fall. Through out the fall term we have bishops celebrating and preaching at Wednesday Eucharist all but one week. We are also blessed to have the new Archbishop of the Province of Ontario - The Most Rev. Caleb Lawrence visiting in November.

Here is the schedule:

Sept. 14th - The Rt. Rev. Anthony Burton - Saskatchewan

Sept. 21st - The Rt. Rev. Michael Bedford-Jones -

Toronto, York-Scarborough

Sept. 28th - The Rt. Rev. George Elliott - Toronto, York-Simcoe

Oct. 5th - The Rt. Rev. Ralph Spence - Niagara

Oct. 12th - Preacher - John Bowen, Celebrant - The Rt. Rev. Peter Mason - ret. Ontario

Oct. 26th - The Rt. Rev. Andrew Atagotaaluk - Arctic



Nov. 2nd - The Rt. Rev. Bruce Howe - Huron

Nov. 9th - The Most Rev. Caleb Lawrence - Moosonee & Prov. of Ontario

Nov. 16th - Bishop Peter Beckwith -

Springfield, IL.

Nov. 23rd - The Rt. Rev. Philip Poole - Toronto, Credit Valley

Nov. 30th - The Rt. Rev. George Bruce - Ontario

ResNet/Digital Phone Requests

Attention Residents!!!

If you are having problems with your ResNet or digital phone (in your room) the below form is available at the Front Desk. Please complete and leave in the Res-Net mailbox - top row in the Porters' Lodge above the

Resident Mailboxes. Paul Patterson checks this box each day he is in the College and will get to you ASAP.

Only requests on the below form will be followed up.

(Please note: Paul is a student and not in the College every day.



Wycliffe College ResNet/Digital Phone Request Form



Name: _____

Date: _____

I am experiencing problems with: Phone ResNet

Do you grant Wycliffe permission to allow a technician access YES NO

Signature Date

Please Describe Your Problem:

Please complete and return form to the mailbox titled "Phone & ResNet" located on the top row of mailboxes in the Porter's Lodge

**ANNOUNCING THE WYCLIFFE COLLEGE ADVANCED DEGREE
SEMINAR
2005-2006**

Last year Advanced Degree Students and faculty met every three weeks or so in the Cody Library to discuss the life and work of Jonathan Edwards. The tradition continues, starting Wednesday September 28th, Cody Library, 1-3 p.m. This year readings and discussion will concern

***The Interface between Traditional Evangelical and
Post-liberal (Narrative) Approaches to the Bible,
Theology and Hermeneutics.***

All AD students are invited to join with the faculty in discussing this timely, relevant topic.

Mark the following dates in your calendar: September 28, October 13, November 2, November 16.

On September 28th, we will discuss two short essays in which *Carl Henry* and *Hans Frei* discuss and assess the approach of the other's theological approach (evangelical and narrative respectively). Photocopies of the readings are available from the mantle in the Porter's Lodge. (The readings come from the Trinity Journal 8 [1987], pp. 3-24.)

Optional additional reading for keeners: David Watson, "The Scope of Hermeneutics," in The Cambridge Companion to Christian Doctrine, ed. Colin E. Gunton, pp. 65-79. (Participants are left to find this reading on their own.)

If you have any questions - please speak with Professor Glen Taylor.