

Academic Calendar 2021-22



Wycliffe College at the University of Toronto



Wycliffe
College

All information corrects at the time of publication (June 2021) Subject to further changes and corrections.

5 Hoskin Avenue, Toronto, Ontario M5S 1H7 Canada

Telephone: (416) 946-3535

Facsimile: (416) 946-8309 Email:

Admissions: admissions@wycliffe.utoronto.ca Registrar: registrar@wycliffe.utoronto.ca Front Desk: info@wycliffe.utoronto.ca

Website: www.wycliffecollege.ca Federated with the University of Toronto

Member College, Toronto School of Theology

Accredited by the Commission on Accrediting of the Association of Theological Schools in the United States and Canada, and the following degree programs are approved:

M.Div. M.T.S. D.Min. Th.M. Th.D. (closed to new applications) Ph.D. in Theological Studies M.A. in Theological Studies

Approved for a Comprehensive Distance Education Program

The Commission Contact information is:

The Commission on Accrediting of the Association of Theological Schools in the United States and Canada

10 Summit Park Drive Pittsburgh, PA 15275

Telephone: (412) 788-6505 Fax: (412) 788-6510

Website: www.ats.edu

PRINCIPAL'S MESSAGE



Dear Fellow Learners,

Most calendars are utilitarian documents. In Rome, they belonged to accountants who fashioned registers noting when accounts were due. But then, I imagine, some poor bookkeeper discovered that this would be a convenient place to record other important dates - like birthdays and anniversaries! Calendars have, of course, become useful aides-mémoires, and in the Wycliffe Calendar you will find a small section that contains important deadlines and notices for the coming academic year (though you are on your own for anniversaries!).

This calendar contains much more useful information, however. Here you will find a description of the College itself, the degrees and programmes being offered, and the regulations and policies that govern our academic and community life. You will also be introduced to the faculty and staff who keep the institution on track and contribute to its vibrancy. In reading this Calendar, I hope that you will catch something of the ethos of the place, and that it will help you to imagine yourself within our fellowship, and to guide you once you are here.

Of course, calendars are also suitable for marking seasons. And those of you who make use of this Calendar will be entering a season of learning. Such seasons are often attended by excitement at the anticipation of faith deepened and quickened, as well as some nervousness at the thought of having our convictions challenged and our scholarly talents tested. For some this Calendar will seem promising, while to others it will seem daunting. I want to say that whatever space this finds you in, I hope that you will be encouraged by the reality that at Wycliffe College, you will find a Christian community: faculty, staff, and student colleagues who understand that this experience, in all of its demands and rewards, is part of our formation as followers of Jesus Christ. And we are confident that, in the goodness of the Lord, it will be a season of growth, both personally and, ultimately, for the Church. For this is the way of our God:

These are the words of the LORD of Hosts: The fasts of the fourth month, and of the fifth, seventh, and tenth months, are to become festivals of joy and gladness for the house of Judah. So, love truth and peace. (Zechariah 8:19)

Yours in the truth and peace of Christ,

A handwritten signature in black ink, reading 'Stephen Andrews'. The signature is stylized with a large, flowing 'S' and a long, sweeping underline that ends in a small arrowhead.

The Rt Rev. Dr Stephen Andrews
Principal and Helliwell Professor of Biblical Interpretation
Wycliffe College Academic Calendar 2021 - 22

Table of Contents

Faculty And Staff.....	7
Administrative Staff.....	Error! Bookmark not defined.
Wycliffe College: An Introduction	25
The Six Principles	26
Mission Statement	26
Statement Of Moral Vision Community Expectations	28
The Toronto School Of Theology	29
Accreditation	29
Origins	29
Governance	30
The Wycliffe College Hymn.....	30
Academic Programs	31
Professional Graduate Programs	31
Academic Degree Programs (Information Correct At May 2020).....	39
Admissions & Application Procedures	41
International Students	42
Professional Graduate Degree Programs.....	43
Academic Graduate Degree Programs.....	44
Registration	46
Academic Information	47
Key Academic Dates	47
Time Limits For Completion Of Programs	49
Grading Scale	49
Policy On Accommodation	53
Resources	54
Wycliffe College Academic Calendar 2021 - 22	5

Library And Information Resources	54
Spiritual Formation	56
The Global Church.....	56
Online Courses	56
Remote Classroom	57
Community Life.....	57
Senior Student Welcome.....	58
Accommodation.....	58
Recreational And Social Facilities.....	60
Founder’s Chapel: The Word Endures	60
Community Programs	61
Financial Assistance	61

FACULTY AND STAFF



THE RIGHT REVEREND STEPHEN ANDREWS

The Principal and Helliwell Professor of Biblical Interpretation BA (Colorado), DipCS (Regent), MDiv (Wycliffe), PhD (Cantab), DD (Wycliffe)

Bishop Stephen Andrews is the Principal of Wycliffe College. A graduate of Wycliffe College and Cambridge University, his academic interests lie in the area of Jewish biblical interpretation in the Second Temple period. He has taught courses on the Prophets of Israel, the Pauline Epistles, Christian Worship, Biblical Hermeneutics, St Mark's Gospel, and the Development of Christian Thought. However, for the past two years he has taught Anglican Liturgy with faculty from Trinity College.

Stephen's evangelicalism was deeply shaped by his two years serving as Study Assistant to John Stott. He has served parishes Vancouver, Halifax and Prince Albert, Saskatchewan. He is a former President of Thorneloe University in Sudbury and was for eight years the Bishop of the Diocese of Algoma. Besides administrative duties, travelling and preaching on behalf of the institution, he is an honorary assistant at St Paul's Anglican Church in Toronto. Stephen and his wife, Fawna, a psychotherapist, have two children and two grandchildren. He enjoys birdwatching and travelling and is an armchair woodworker.



THE REVEREND ANNETTE BROWNLEE

Chaplain, Director of Field Education, and Professor of Pastoral Theology B.A., MLS, M.A. M.Div. (General Theological Seminary) D. Min (Wycliffe)

Annette G. Brownlee is the Chaplain of Wycliffe College, Director of Field Education and teaches in the Pastoral Theology Department. Her research interests include the multiple implications of preaching Scripture as the church's book, Augustine's divine pedagogy as a rule of life for preachers, the sermons of André Trocmé and a model of theological reflection based on the Spirit's use of Scripture in the church. Before coming to Wycliffe Annette was in fulltime parish ministry for many years. She currently assists and preaches at St. Paul's

L'Amoreaux in Scarborough.

She is married to Ephraim Radner and they have two children.

Select Publications:

- *"Is Worship a Waste of a Good Sunday Morning."* In Thomas P. Power, ed. *A Guide for the Christian Perplexed*. Eugene, OR: Wipf & Stock, 2012.
- *"The Politics of Repentance: the Christian faith and ethics of André Trocmé"* in *Church, Society, and the Christian Common Good: Essays in Conversation with Philip Turner*. Edited by Ephraim Radner. Eugene, OR: Cascade Books, 2017

- *Preaching Jesus Christ Today: Six Questions for Moving from Scripture to Sermon.*
- Grand Rapids, MI: Baker Publishing Group, 2018.
- “*The Ordering of Creaturely Life: as sermon on Exodus 19:16-20:17*” in *Redemption and Relationship: Sermons on Exodus*. Edited by Andrew Witt.: Wipf & Stock



REVEREND STEPHEN CHESTER

Lord and Lady Coggan Professor of New Testament
BA (University of York), BD (University of Glasgow), PhD (University of Glasgow)

Stephen has taught New Testament at Wycliffe College since 2019. He was previously a member of faculty at North Park Theological Seminary, Chicago (2006-2019) and International Christian College, Glasgow (1999-2006). Originally from Liverpool, England, he also lived for significant periods in both Wales and Scotland before moving to the United States. Stephen’s research interests focus on Pauline theology, especially the history of reception of Paul’s texts in the Reformation era. They also include conversion in the ancient world and the theological interpretation of Scripture. Stephen is married to

Betsy and they have two adult sons, Iain and Mark. Stephen enjoys reading both detective fiction, especially if set in Scotland, and historical studies, mainly of the medieval period. He also enjoys following his favorite sports teams: Liverpool and Partick Thistle (football) and Lancashire (cricket). He has a long-standing interest in urban ministry and mission and has been formed by having been a long-term member of two small city churches: Ruchazie Parish Church, Glasgow (Church of Scotland) and Immanuel Evangelical Covenant Church, Chicago.

Select Publications

Books

- *Reading Paul with the Reformers: Reconciling Old and New Perspectives* (Grand Rapids: Eerdmans, 2017)
- *Perspectives on our Struggle with Sin: Three Views of Romans 7* (with Grant R. Osborne, Mark A. Seifrid, and Chad O. Brand; Nashville: Broadman & Holman, 2011)
- *Conversion at Corinth: Perspectives on Conversion in Paul’s Theology and the Corinthian Church* (London & New York: T&T Clark International, 2003)

Other

- ‘Salvation, the Church, and Social Teaching: The Epistle of James in Exegesis of the Reformation Era,’ in *Reading the Epistle of James: A Resource for Students*, ed. Eric F. Mason and Darian R. Lockett (Atlanta: SBL Press, 2019), 273-90
- “‘Abba! Father!’ (Gal. 4:6): Justification and Assurance in Martin Luther’s Lectures on Galatians (1531/1535),’ in *Biblical Research* 63 (2018), 15-22
- ‘Interpreting the Bible and Changing the World: The Phenomenon of Martin Luther,’ in *The Expository Times* 129.1 (2017), 3-13.
- ‘Conversion’ in *Oxford Encyclopedia of the Bible and Theology Vol. 1* (Oxford: Oxford

University Press, 2015), 148-51.

- 'Apocalyptic Union: Martin Luther's Account of Faith in Christ,' in *In Christ in Paul* (ed. M. J. Thate, K. Vanhoozer, and C. Campbell; Tübingen: Mohr Siebeck, 2014), 375-98.
- 'Faith Working through Love (Gal. 5:6): The Role of Human Deeds in Salvation in Luther and Calvin's Exegesis,' in *Doing Theology for the Church: Essays in Honor of Klyne Snodgrass* (ed. R.A. Eklund and J.E. Phelan; Eugene, Ore.: Wipf & Stock, 2014), 41-54.
- 'Paul and the Galatian Believers,' in *The Blackwell Companion to Paul* (ed. S. Westerholm; Oxford: Basil Blackwell, 2011).
- 'Romans 7 and Conversion in the Protestant Tradition,' in *Ex Auditu* Vol. 25 (2010), 135-71.
- 'It is no longer I who live: Justification by Faith and Participation in Christ in Martin Luther's Exegesis of Galatians,' in *New Testament Studies* 55.3 (2009), 315-37.
- 'Who is Freedom for? Martin Luther and Alain Badiou on Paul and Politics' in *Paul, Grace and Freedom: Essays in Honor of J.K. Riches* (ed. P. Middleton, A. Paddison, and K. Wennell; London and New York: T&T Clark International, 2009), 95-118.
- 'When the Old Was New: Reformation Perspectives on Galatians 2:16' in *The Expository Times* 119.7 (2008), 320-29.
- 'Paul and the Introspective Conscience of Martin Luther: The Impact of Luther's *Anfechtungen* on his Interpretation of Paul' in *Biblical Interpretation* 14.5 (2006), 508-36.
- 'Paul: Archetypal Convert and Disputed Convert' in *Finding and Losing Faith: Studies in Conversion* (ed. C. Partridge and H. Reid; Carlisle: Paternoster Press, Religion and Culture Series, 2006), 123-49.
- 'Divine Madness? Speaking in Tongues in 1 Cor. 14:23' in *Journal for the Study of the New Testament*, 27.4 (2005), 417-46.



TERENCE L. DONALDSON

Lord and Lady Coggan Professor Emeritus of New Testament Studies

B.Sc. (Toronto), M.Rel., Th.M., Th.D. (Wycliffe)

After completing his doctorate in 1982 (at Wycliffe), Terry Donaldson taught for seventeen years in Saskatoon at the College of Emmanuel and St. Chad, the Anglican seminary on the campus of the University of Saskatchewan. In 1999, he returned to Wycliffe where he taught full-time until 2016, when he began an active retirement. His teaching and research interests include Matthew; Paul; hermeneutics; Second Temple Judaism; Gentilization of early Christianity, and early Christian-Jewish relations. As well as books, he has published about forty journal articles

or chapters, and many reviews. His current research project has to do with ethnicity, identity and the emergence of Gentile Christianity. As a scholar, he is fascinated with the process by which the early church, from its beginnings as an eschatological renewal movement entirely within the Jewish environment, developed within a century or so into a largely Gentile religion, separate and distinct from the synagogue. As a Christian educator and layperson, he is concerned to lead students (and others) to a richer appreciation of the gospel that stands at the heart and center both of the Bible and of the grand and richly diverse tradition of the church. Outside work Terry enjoys banjo-playing,

ballroom dancing, bread-baking, camping, and cycling. He and his wife, Lois, live in downtown Toronto and are members of St Aidan's parish. They have two adult children, two children-in-law and three grandchildren.

Select Publications

- "Gentiles." In Oxford Bibliographies in Biblical Studies (Oxford University Press, 2018)
- "Paul, Abraham's Gentile 'Offspring' and the Torah." In Torah Ethics & Early Christian Identity (2016)
- "Supersessionism and Early Christian Self-definition." In Journal of the Jesus Movement in its Jewish Setting 3 (2016)
- "Paul within Judaism: A Critical Evaluation from a 'New Perspective' Perspective." In Paul Within Judaism (Fortress, 2015)
- Jews and Anti-Judaism in the New Testament (2010)
- Judaism and the Gentiles: Jewish Patterns of Universalism (2007)
- Religious Rivalries and the Struggle for Success in Caesarea Maritima (editor; 2000)
- Paul and the Gentiles (1997)
- Jesus on the Mountain (1985)



MARK ELLIOTT

Professorial Fellow

Mark W Elliott was schooled in Glasgow. For university he went to read Law at Oxford, then he studied Divinity at Aberdeen and gained his PhD in Patristics at Cambridge University. He then taught at the universities of Nottingham, Liverpool Hope and St Andrews (from 2003-18) and is now employed at Glasgow University where he is Professor of Divinity and Biblical Criticism. His two forthcoming projects are History of Scottish Theology (co-edited with David Fergusson, published by Oxford University Press, 2019) and Providence: Biblical and Theological with Baker (2020). He is co-chair of the History of Interpretation Section at the Annual

Meeting of the Society for Biblical



CATHERINE SIDER HAMILTON

Professor of New Testament and New Testament Greek
B.A., M.Div. (Trinity, Toronto), M.A. (Queens), Ph.D. (USMC)

The Rev. Dr. Catherine Sider Hamilton teaches NT and Greek at Wycliffe College and serves as Priest-in-Charge at St. Matthew's Anglican Church Riverdale. She seeks in this way to live the vocation of a "scholar-priest," serving Christ in both church and academy, in the conviction that the academic study of theology finds its goal and purpose in the life of the church, as it also nurtures and challenges the church. Her teaching and research interests include Gospels (especially Matthew), Paul, Second Temple Judaism and early Jewish biblical interpretation, history of Christian interpretation, women of the early and medieval church. Her monograph on Matthew was published by Cambridge Press in 2017. She has also published two volumes of essays for the church, as well as several journal articles and book chapters on Matthew, Paul, and History of Interpretation. She is fascinated by the way the church and Israel read their scriptures, and seeks to work at the intersection of biblical studies and theology, taking seriously the historical claim and location of the scriptures, as well as their witness and function as Word of God. She and her husband David have four (mostly) adult children and live in Toronto's Greektown. She enjoys—after visiting her new grandchild—music, good books, David's Indian cooking, and all things Italian.

Select Publications

- *The Death of Jesus in Matthew: Innocent Blood and the End of Exile*. Cambridge: Cambridge University Press, 2017.
- Francis Watson's Gospel Writing: Scholarly Perspectives. Editor, with Joel Willitts. Bloomsbury/T&T Clark, forthcoming.
- In Spirit and in Truth: The Challenge of Discernment for Canadian Anglicans Today. Edited by Catherine Sider Hamilton, Peter M. B. Robinson, and George Sumner. Vancouver: Regent, 2009.
- "The Death of Judas in Matthew: Matt 27:9 Reconsidered," JBL 137.2 (2018-forth-coming)
- "Jonathan Edwards, Paul, and the Priority of Holiness: A Variant Reading," JTI 7 (2013): 1-20.
- "Blood and Secrets: The Re-telling of Genesis 1-6 in 1 Enoch 6-11 and its Echoes in Susanna and the Gospel of Matthew." In "What Does the Scripture Say?" Studies in the Function of Scripture in the Gospels and Letters of Paul, Volume I: The Synoptic Gospels, edited by Craig A. Evans and H. Daniel Zacharias, 90-141. London: T&T Clark, 2012.
- "'His Blood Be upon Us': Innocent Blood and the Death of Jesus in Matthew," CBQ 70 (2008): 82-100.
- "Egeria: Christianity." In Encyclopedia of the Bible and Its Reception, vol. 7, edited by Hans-Josef Klauck et al, 462-63. Berlin: de Gruyter, 2009—.
- "Sex and the Garden: Genesis 3 and the Sanctity of Human Relationships." In In Spirit and in Truth: The Challenge of Discernment for Canadian Anglicans Today.

- “Remembrance Day,” in Best Sermons 5 (San Francisco: Harper/Collins, 1992).



THE REVEREND CANON ALAN L. HAYES

Bishops Heber and Frederick Wilkinson Professor of the History of Christianity Director, Toronto School of Theology B.A. (Pomona), B.D., Ph.D. (McGill)

Alan Hayes has taught church history at Wycliffe since 1975, when he completed his Ph.D. in religious studies at McGill University, Montreal. His teaching and research specializations include Anglicanism, Canadian Protestantism, early Christianity, Reformation, and Historiography. The historical theme which most interests him is how Christians make connections or disconnections between faith and their culture. He lives

in Oakville, where he is honorary assistant priest at St. Simon's Anglican Church. He is married to the Reverend Dr. Morar Murray-Hayes, the minister of Maple Grove United Church, Oakville. Alan also serves as the Director of the Toronto School of Theology.

Select Publications

- Chapters in Vatican II: Expériences canadiennes / Canadian Experiences (2011) and
- Baptism: Historical, Theological, and Pastoral Perspectives (2011)
- An Ecclesiastical Proletariat: Canadian Anglican Women Trained as Church Workers, 1893-1969 (Toronto: Wycliffe College, 2006)
- Anglicans in Canada: Controversies and Identity in Historical Perspective (2004) The Parish and Cathedral of St. James', Toronto, 1797-1997 (with others, 1998) Church and Society in Documents A.D. 100-600 (1997)
- 'What Happened to Morning Prayer?': The Service of the Word as Principal Sunday Liturgy (Toronto: Wycliffe College, 1997) (coauthor)
- A New Introduction to John Wycliffe (Toronto: Wycliffe College, 1994) (co-author)
- Holding Forth the Word of Life: Little Trinity Church 1842-1992 (Toronto: Little Trinity Church, 1991)
- By Grace Co-workers: building the Anglican Diocese of Toronto, 1780-1989 (editor and contributor, 1989)
- Several entries for the Dictionary of Canadian Biography, the Encyclopedia of Religion in America, Religions of the World, Wiley-Blackwell Companion to the Anglican Communion, etc., as well as articles in the Journal of the Canadian Church Historical Society and the Toronto Journal of Theology.



THE REVEREND L . ANN JERVIS

Professor of New Testament

B.A. (York), M.Div. (Queen's), Th.D. (Wycliffe/Toronto)

Ann's academic interests revolve around Paul. She has also written and taught in the area of hermeneutics, gospel studies and the early church. She has been an invited speaker at institutions and conferences in Europe, the United States, the Caribbean and China. She is a member of the Center of Theological Inquiry, Princeton, and the American Theological Society. Ann is a Senior Fellow at Massey College, University of Toronto. She has been the recipient of a Lilly Theological Scholars Grant and currently holds a five year Social

Science and Humanities Grant for her project on Paul's view of time. For four years she was resource theologian for the Pastor-Theologian Program run out of Princeton's Center of Theological Inquiry. Ann is a priest in the Diocese of Toronto and an honorary assistant at Church of the Redeemer, Toronto. Ann is the author of numerous journal articles and book chapters.

Select Publications.

- Introduction and Annotations for Romans in The New Oxford Annotated Bible, 5th ed., 2018.
- 'Paul the Theologian', in R. Barry Matlock, ed., The Oxford Handbook of Pauline Studies, 2017 (<http://www.oxfordhandbooks.com/view/10.1093/oxfordhb/9780199600489.001.0001/oxfordhb-9780199600489-e-26>)
- At the Heart of the Gospel: Suffering in the Earliest Christian Message. Grand Rapids, MI: Eerdmans, 2007.
- Galatians. NIBC 9. Peabody, MA: Hendrickson, 1999 (reprinted by Baker, 2011).
- The Purpose of Romans: A Comparative Letter Structure Investigation. Sheffield: Sheffield University Press, 1991.
- Ann currently is writing a book on Paul's view of time under contract with Baker Academic



DAVID KUPP

Community Development

Director of Master of Theological Studies in Development

B.A. (Whitworth), M.A. (Fuller), Ph.D. (Durham)

David leads and teaches the urban and community development program at Wycliffe. He spent much of the past 30+ years engaged with development projects and partners in 25 countries, as a listener, leader, facilitator, researcher and trainer. David enjoys weaving together the academic, practitioner and neighbourhood worlds of social innovation, sustainable communities and faith. He remains forever a student of community-based research,

citizen advocacy, contextual theology and adult learning approaches.

David has authored publications in biblical studies, poverty and development, urbanization, faith-based NGOs, environment and gender. He has taught for the Master of Peace & Conflict at Conrad Grebel University College, and in Humber's graduate International Development program. David and Ellen Ericson Kupp are life partners with three adult children, and another offspring – Kabisa International, where they consult with a range of domestic and international non-profits. If you can't find David, he's somewhere in the city with a community partner. Or he may have snuck off to his woodworking shop. Or disappeared among the islands of Georgian Bay.

Select Publications

- "The Poor and Poverty in African Religious Traditions." With Stephen Hewko. In
- Poverty and the Poor in the World's Religious Traditions (Praeger, 2018).
- "Urban Aboriginal Peoples: Potential Prairie Partnerships for Child Well-Being" (Kabisa, 2013).
- "Who is My Neighbour? The Perplexities of International Development." In T. Power, Guide for the Christian Perplexed (2012).
- The Keys to the City: Finding New Doorways into Urban Transformation (WVI, 2008).
- "'Boys Only': Exposing the Roots of Girl Child Troubles." In Shaping the Future: Girls and Our Destiny (2008).
- "Earthkeeping and the Poor." With Harry Spaling, Janelle Zwier. Perspectives on Science and Christian Faith: Journal of the American Scientific Affiliation 53 (2001). "Poverty and Ecology: Re-Integrating Priest, Pauper and Professional." LISTENING:
- Journal of Religion and Culture 35 (2000).
- Matthew's Emmanuel: Divine Presence and God's People in the First Gospel
- (Cambridge University, 1996).



WANDA MALCOLM

Professor of Pastoral Psychology

B.A. (Lakehead/York), M.A. (OISE), Ph.D. Clinical Psych. (York)

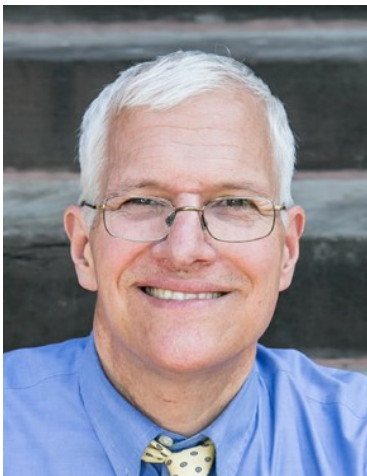
Wanda Malcolm is Professor of Pastoral Psychology, teaching courses in the formation of pastoral care ministry, pastoral psychology, and forgiveness and reconciliation. She also has a private practice in clinical psychology (www.drmlcolmpsychoanalyst.com). As a clinician who teaches, Wanda brings to Wycliffe an interest in the interface between pastoral theology and psychology. Her teaching focuses on the practical and constructive ways in which these disciplines offer separate but not unrelated perspectives on responsible self-care and

effective self-leadership in providing ethical and sensitive pastoral care.

Select Publications

- Malcolm, W., Coetzee, K., and Fisher, E. (2019). Measuring ministry-specific stress and satisfaction: The psychometrics of the Positive and Negative Aspects Inventory, Journal of Psychology and Theology, 47(4) 313–327.
- Greenberg, L., Warwar, S. & Malcolm, W. (2010). Emotion-focused couples' therapy and the facilitation of forgiveness. Journal of Marital and Family Therapy, 36 (1), 28 – 42.

- Greenberg, L., Warwar, S. & Malcolm, W. (2008). Differential effects of emotion focused therapy and psycho-education in facilitating forgiveness and letting go of emotional injuries. *Journal of Counseling Psychology*, 55(2), 185-196.
- Malcolm, W. (2007). The timeliness of forgiveness. In W. Malcolm, N. DeCourville, and K. Belicki (Eds.) *Women's Reflections on the Complexities of Forgiveness*. New York: Routledge.
- Malcolm, W., Warwar, S., & Greenberg, L. (2005). Facilitating Forgiveness in Individual Therapy as an Approach to Resolving Interpersonal Injuries. In E. Worthington, Jr. *The Forgiveness Handbook*. New York, NY: Brunner-Routledge.
- Greenberg, L., & Malcolm, W. (April 2002). Relating process to outcome in the resolution of unfinished business. *Journal of Consulting & Clinical Psychology*.
- Malcolm, W. and Greenberg, L. (2000). Forgiveness as a Process of Change in Individual Psychotherapy. In M. McCullough, K. Pargament, and C. Thoresen (Eds.) *Forgiveness: Theory, Practice, and Research*. New York: Guilford Press.



JOSEPH MANGINA

Professor of Systematic Theology
A.B. (Princeton), M.Div., Ph.D. (Yale)

Joseph Mangina, a native of New Jersey, has taught Theology at Wycliffe College since 1998. He received his M.Div degree from Yale Divinity School and his Ph.D from the Yale Graduate School (1994). In the early 1980's he spent two years engaged in ecumenical work in West Berlin and the former East Germany. His scholarly interests include ecclesiology, ecumenism, sacramental theology, and theological exegesis of Scripture. He is the editor for *Pro Ecclesia: A Journal of Catholic and*

Evangelical Theology. In 2008 he delivered the Thomas F. Torrance Lectures at the University of Aberdeen, Scotland. His non-academic interests include cooking, cycling, hiking, singing, and reading detective and spy novels. A special favorite are the espionage thrillers of Alan Furst.

Professor Mangina's wife, Dr. Elisa Mangina, has a PhD in Medieval Studies from Cornell and a J.D. from the University of Toronto Law School. They are the parents of Frances and Nicholas.

Select Publications.

- *The True Vine: Scriptural Ecclesiology and the Gospel of John* (forthcoming, contracted with Baker Academic Press)
- "Barth on the Christian Life," in *The Oxford Handbook to Karl Barth* (forthcoming)
- "Baptism at the Turn of the Ages," in *Apocalyptic and the Future of Theology: With and Beyond J. Louis Martyn* (Cascade Books, 2012).
- "The Cross-Shaped Church: A Pauline Amendment to the Ecclesiology of Koinonia" in *Critical Issues in Ecclesiology: Essays in Honor of Carl Braaten* (2011)
- *Revelation in the Brazos Theological Commentary Series* (2010)
- *Karl Barth: Theologian of Christian Witness* (2004)
- *Karl Barth on the Christian Life: The Practical Knowledge of God* (2001)

- “After Mediating Theologies: Karl Barth Between Radical and Neo-Orthodoxy”
- Scottish Journal of Theology 56/04 (2003)
- “Ecumenical Theology” in The Dictionary of Historical Theology, ed. Trevor Hart (2000)



THE REVEREND CANON DOCTOR JUDY PAULSEN

Professor of Evangelism

Director of the Institute of Evangelism

B. A. (University of Western Ontario), M. Sc. A. (McGill),

M. Div. (Wycliffe), D. Min. (Fuller Theological Seminary)

Judy Paulsen serves as Wycliffe’s Professor of Evangelism and Director of the Institute of Evangelism. As the daughter of Anglican

missionaries, she lived her early childhood years in northwest India, prior to moving to Ottawa where she spent her later childhood and teen years. She holds a Master of Applied Science from McGill University, a Master of Divinity from Wycliffe, and a Doctor of Ministry in Missional Leadership from Fuller Theological Seminary. Judy served for fifteen years as a parish priest in the Anglican Diocese of Toronto prior to accepting her present position. During that time she has also served as a speaker at a variety of conferences, retreats and workshops; something she continues to enjoy. Judy’s primary interests lie in effective communication of the gospel in today’s culture, and organizational change in the Church.

Select Publications

- “How To (And How Not To) Pastor” in Hard Words for Desperate Times: Going Deep with Ezekiel, Caleb Gundlach (Ed.), Wycliffe Studies in Gospel, Church and Culture, Wipf and Stock Publishers: Eugene, OR, 2020. (p.70-76)
- “Being Intentional in Leadership” in Good News Church: Celebrating the Legacy of Harold Percy. John Bowen & Michael Knowles (Eds.) Burlington, ON: Castle Quay Books, 2018. (p.49-62).
- “Standing Fast in the Meantime” in Behold, I am Coming Soon, Mari Leesment (Ed.), Wycliffe Studies in Gospel, Church and Culture, Wipf and Stock Publishers: Eugene, OR, 2018 . (p.44-48)
- Christian Foundations: A Grounding for a Life of Faith, a catechetical tool for people with little to no background in Christianity, co-authored with Patrick Paulsen and Susan Bell (Wycliffe College: Toronto, 2017)
- “A Holy God: The Sanctus,” in Come Let Us Sing to the Lord: Songs of Scripture, edited by Katherine Steiner (Wipf & Stock: OR, 2017)
- “Pray Then Like This: Our Father, Who Art in Heaven,” in the Lord’s Prayer, edited by Karen Stiller (Wipf & Stock: OR, 2017)
- “Hedonism,” in Idols of Our Age, edited by Thomas Power (Wipf & Stock: OR, 2017)
- Invited: Exploring Genuine Christian Invitation, co-authored with Susan Bell (Diocese of Toronto: ON, 2015)

- “Does Messy Church Produce Disciples?”, in *Messy Church Theology: Exploring the significance of Messy Church for the wider church*, edited by George Lings (Abingdon: UK, 2013).
- “Unwrapping All Our Gifts: A Neglected Key to Evangelism,” *Wycliffe Booklets on Evangelism* (Toronto, 2004).



THOMAS POWER

Theological Librarian

Academic Graduate Degree Coordinator

B.A., Ph.D. (Trinity College Dublin), M.L.S. (Toronto), Certificate in Distance Education (Wisconsin-Madison)

Tom Power was born in Ireland where he was educated at Trinity College Dublin. He has taught history at the University of New Brunswick and the University of Toronto. He joined the faculty of Wycliffe College in 1998 as college librarian, and continues as theological librarian in the John W. Graham Library. In addition, he is

the graduate studies coordinator, oversees the program of online courses, coordinates internships in the MTS (Development) program, and attends to the college archives. His teaching interests focus on 18th- and early 19th-century Irish and British church history. His current research is on the history of theological education specifically at Trinity College Dublin in the period 1790-1850. Tom and his wife, Marlene, are the parents of two adult children.

Select Publications

- *A Flight of Parsons: The Divinity Diaspora of Trinity College Dublin* (editor, 2018)
- *Confronting the Idols of Our Age* (editor, 2017)
- *Reformation Worlds: Antecedents and Legacies in the Anglican Tradition* (co-editor, 2016).
- *Ministers and Mines: Religious Conflict in an Irish Mining Community, 1847-1858* (2014)
- *Change and Transformation: Essays in Anglican History* (editor, 2013)
- *Guide for the Christian Perplexed* (editor, 2012)
- *Forcibly Without Her Consent: Abductions in Ireland, 1700-1850* (2010)
- *Converts and conversion in Ireland, 1650-1850* (co-editor, 2005)
- “Publishing and sectarian tension in south Munster in the 1760s” *Eighteenth-Century Ireland* 18 (2004)
- *Land, Politics and Society in Eighteenth-Century Tipperary* (1993).
- *Wycliffe Studies in Gospel, Church, and Culture*. (Wipf and Stock) General editor. *Wycliffe Studies in History, Church, and Society* (Wipf and Stock) General editor. He has contributed to the *Oxford Dictionary of National Biography*, and the *Cambridge Dictionary of Irish Biography*.



THE REVEREND EPHRAIM RADNER

Professor of Historical Theology
A.B. (Dartmouth College), Ph.D. (Yale)

Prior to his appointment as Professor of Historical Theology, the Rev. Dr. Radner was rector of the Episcopal Church of the Ascension, Pueblo, Colorado. His range of ministerial experience includes Burundi, where he worked as a missionary, Haiti, inner-city Cleveland, and Connecticut. He has taught at seminaries in Connecticut and Colorado. In the Anglican Communion context he is a member of the Covenant Design Group. He is a violinist, hiker, and traveler. He is

married to the Rev. Annette Brownlee and they are the parents of Hannah and Isaac. Radner's research and teaching interests include pneumatology, ecclesiology and ecumenism, and biblical hermeneutics. Radner is currently co-editing a volume on Anglican figural reading of the Scriptures, and working on a larger project involving Christian politics.

Select Publications

- *Profound Ignorance: Modern Pneumatology and its Anti-modern Redemption* (2019)
- *Chasing the Shadows: An Introduction to Natural Theology, II* (2018)
- *Church* (2017)
- *A Time to Keep: Theology, Mortality, and the Shape of a Human Life* (2016)
- *Time and the Word: The Figural Reading of Scripture* (2016)
- *A Brutal Unity: the Spiritual Politics of the Christian Church* (2012) *The World in the Shadow of God* (2010)
- *Leviticus* (2007)
- *The Fate of Communion: The Agony of Anglicanism and the Future of a Global Church* (2006)
- *Hope among the Fragments: The Broken Church and its Engagement of Scripture* (2004)
- *Spirit and Nature: the Saint-Médard Miracles in 18th-century Jansenism* (2002)
- *The End of the Church* (1999)
- *The Rule of Faith: Scripture, Canon, and Creed in a Critical Age* (1998)
- *Inhabiting Unity: Theological Perspectives on the proposed Lutheran-Episcopal Concordat* (1995)
- *Reclaiming Faith: Essays on Orthodoxy in the Episcopal Church and the Baltimore Declaration* (1993)



THE REVEREND PETER ROBINSON

Academic Dean and Professor of Proclamation, Worship and Ministry
B.Sc. (Agr.) (Guelph), M.C.S. (Regent), Ph.D. (Kings College, London, U.K.)

Peter became the Academic Dean in 2019. He continues to teach as the Professor of Proclamation Worship and Ministry. Full time since 2011, he began teaching at Wycliffe in 2002. He taught as adjunct faculty at Tyndale from 2002- 2010. He has served in parishes in the Diocese of Toronto and in France and England. He continues to serve in the Diocese of Toronto on the postulancy committee and as an honorary priest. He is a member of He is the chairman of the board for Langham Partnership Canada and serves on the international board. He is particularly interested in questions of theology in the context of the formative life of the local church community. His current research focuses on the relationship between discipleship (or formation) and missional thinking. He enjoys bread making, gardening and sailing. He and his wife Tiffany are the parents of three young adults - Ben, Sofia and Anna.

Select Publications

- "Acculturation, Enculturation and Social Imaginaries: The Complex Relationship between the Gospel and Culture" in Putting Children in their Place: Corporal Punishment, Theology and Reconciliation (2020)
- The Word is Near You: Seeds of the Reformation, Wipf and Stock. Editor (2018)
- "Take and Eat: Knowing God in Worship" in "Behold I Am Coming Soon": Meditations on the Apocalypse of John (2018)
- "The Full Exodus Story" in Meditations on Exodus (2018)
- "Song of Deliverance: Cantemus Domino" in Come Let Us Sing to the Lord: Songs of Scripture (2017)
- "Narcissism" in Confronting the Idols of Our Age (2017)
- In Spirit and in Truth: the Challenge of Discernment for Canadian Anglicans Today, co-editor (2009)"
- A Little Lower Than God: the Integrity and Dignity of Human Persons and Relationships" in: In Spirit and in Truth: the Challenge of Discernment for Canadian Anglicans Today (2009)
- "The Trinity: the Significance of Appropriate Distinctions for Dynamic Relationality" in Trinitarian Soundings in Systematic Theology (November 2005)
- "Cappadocian Distinctions on the Being of God" in Alive to the Love of God: Festschrift in Honor of James Houston ed. (1998).



THE REVEREND CANON CHRISTOPHER SEITZ

Senior Research Professor

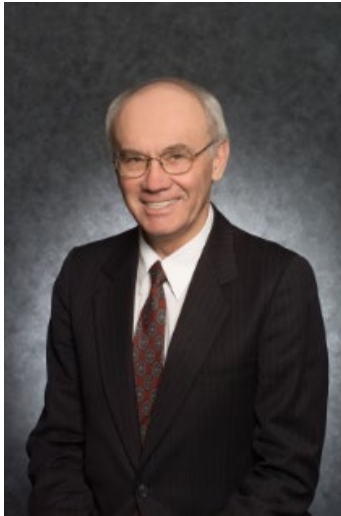
A.B. (North Carolina), M.T.S. (Virginia Seminary), S.T.M., Ph.D. (Yale)

Christopher Seitz was Professor of Old Testament at Yale University and the University of St Andrews before coming to Wycliffe in 2007. He is an ordained Episcopal Priest and has served parishes in Connecticut, Pennsylvania, Germany, France and Scotland. He is the past President of the Anglican Communion Institute and has been involved in recent work on behalf of Communion life. He is the editor of *Studies in Theological Interpretation* and is on the Advisory Board

of the Scripture and Hermeneutics Consultation. He has supervised numerous Ph.D. students and has published over a dozen books on the interpretation of Old and New Testaments and in the area of theological hermeneutics. He is a two-time recipient of the Alexander von Humboldt research award. Dr. Seitz also produces a regular podcast with Wycliffe titled *Insights with Seitz: The Symphony of Scripture*. Select Publications

Select Publications

- *Convergences: Canon and Catholicity* (2020)
- *The Elder Testament: Canon, Theology, Trinity* (2018)
- *Joel: International Theological Commentary* (2016)
- *Colossians in the Brazos Theological Commentary Series* (2014)
- *The Bible as Christian Scripture*, ed. (2013)
- *The Character of Christian Scripture: The Significance of a Two-Testament Bible* (2011)
- *The Goodly Fellowship of the Prophets: the achievement of association in canon formation* (2009)
- *Prophecy and Hermeneutics: Towards a New Introduction to the Prophets* (2007)
- *Reading and Preaching the Book of Isaiah* (2002)
- *Nicene Christianity: The Future for a New Ecumenism* (2001)
- *Figured Out: typology and providence in Christian Scripture* (2001)
- *Word Without End: the Old Testament as abiding theological witness* (1997)
- *Isaiah 1-39: Interpretation Commentary* (1993)
- *Zion's Final Destiny: the development of the Book of Isaiah: a reassessment of Isaiah 36-39* (1991)



DOCTOR VICTOR SHEPHERD

Professorial Fellow

Dr. Victor Shepherd is currently Professor of Theology, Tyndale University College & Seminary. He was appointed the first occupant of the Donald N. and Kathleen G. Bastian Chair of Wesley Studies in 1993, and occupied it for eleven years. He has published academic monographs in Wesley, Luther and Calvin, several books of sermons and church-related items, and hundreds of articles, both academic and professional. From 2002 to 2016 he was an adjunct faculty member in the Faculty of Divinity, Trinity College, University of Toronto, in which position he taught courses in Luther, Wesley and Calvin, and additionally supervised graduate students. Dr. Shepherd has taught courses in

Historical Theology and the Reformation at Emmanuel College (TST), McMaster University, and Memorial University of Newfoundland. He is also appointed to the Graduate Theological Union, University of Oxford, U.K.

Select Publications

- The Committed Self: An Introduction to Existentialism for Christians, (2015)
- Mercy Immense and Free: Essays on Wesley and Wesleyan Theology (2016)
- A Ministry Dearer Than Life: The Pastoral Legacy of John Calvin (2009)
- Interpreting Martin Luther: An Introduction to His Life and Thought (2008)
- Articles:
- “The ‘Charge’ We Have to ‘Keep’”: Enhancing Gospel-Integrity in Christian Higher Education”, Christian Higher Education in Canada, (2020) [forthcoming]
- “Divine Pathos and the Church: The Cruciform Vulnerability of God”, Divine Suffering: Theology, History and Church Mission, (2020) [forthcoming]
- “Anti-Semitism in the Reformation Era”, Reformation Then and Now, (2020), [forthcoming]
- “Martin Luther and the Origins of the Reformation”, Reformation Then and Now, (2020), [forthcoming]
- “The Understanding of the Human in Christian Higher Education”, McMaster Divinity College Journal of Theology and Ministry, (2019)
- “Emil L. Fackenheim: Gratitude for the Gift that He Was”, The Reform Jewish Quarterly, (2019)
- “Canadian Methodism”, Melton’s Encyclopedia of American Religions (9th Edition); (2016)
- “The Pastoral Function of Calvin’s Doctrine of Election”, Evangelical Calvinism II, (2016)
- “The Story of Our Life: Written by the God Who Suffers for Us and with Us”, Canadian Theological Review, (2016)
- “Reformers, Philosophers, Kierkegaard, and the Akedah Yitzakh”, Irreconcilable Differences? Fostering Dialogue among Philosophy, Theology and Science, (2015)



DOCTOR MARION TAYLOR

Professor of Old Testament Academic Graduate Degree Director
B.A., M.A. (Toronto), M.Div. (Knox/Toronto),
S.T.M. (Yale Divinity), M.A., M.Phil., Ph.D. (Yale)

Raised in Toronto, Marion Taylor has been teaching Old Testament at Wycliffe since 1986. She loves teaching the introductory Old Testament course as it allows her to instill in students a lifelong interest in the Old Testament. She also teaches courses on Jeremiah, Ruth and Esther, Bad Boys and Bad Girls of the Bible, Women Interpreters of the Bible, Psalms and the History of the Interpretation of the Bible. Her

commentary on Ruth and Esther for Zondervan's The Story of God Commentary series is scheduled for release Fall 2020. The podcast she cohosts with Kira Moolman, That's What She Said (About the Bible) digs up the words of forgotten women and explores their lives, their influences, and their relevance for today. <https://www.wycliffecollege.ca/podcast/thatswhatshe said>. Breaking Silence: Women Biblical Interpreters through the Centuries that Marion wrote with Joy Schroeder will be published by Westminster John Knox Fall 2021. Marion's Handbook of Women Biblical Interpreters: A Historical and Biographical Guide (Baker 2012) won several awards, including The Word Guild's 2013 Best Canadian Academic Book Award and ForeWord Review's 2012 Silver Medal Book of the Year Award. Marion continues to publish in the area of the history of women's interpretations of the Bible. Women of War Women of Woe: Joshua and Judges through the Eyes of Nineteenth-Century Female Biblical Interpreters was published in 2016. Her co-edited volume Women in the Story of Jesus: The Gospels through the Eyes of Nineteenth-Century Female Biblical Interpreters was also released in 2016. She has begun research for a book on women's writings on Paul through the ages. She received a mentoring award from the SBL Committee on the Status of Women, Nov 2006. She is married to Glen Taylor and they have three adult children and a dog. She loves to spend time reading and writing at their cottage in northern Ontario where she helps out at the little Anglican church on Eagle Lake.

Select Publications

- Ruth and Esther (The Story of God Bible Commentary) 2020
- Women of War Women of Woe: Joshua and Judges through the Eyes of Nineteenth-Century Female Biblical Interpreters. 2016.
- Women in the Story of Jesus: The Gospels through the Eyes of Nineteenth-Century Female Biblical Interpreters. 2016.
- Handbook of Women Biblical Interpreters: A Historical and Biographical Guide. 2012.
- "Can These Dry Bones Live: Old Princeton's Legendary Nineteenth-Century Old Testament Professors and What They Can Teach Us Today." Theology Today, 2012.
- "The Psalms outside the Pulpit: Applications of the Psalms by Women of the Nineteenth Century," in Interpreting the Psalms for Teaching and Preaching. 2010.

ADJUNCT FACULTY FOR 2021-22

- **+MWITA AKRI**
African Christianity
- **ANDREW BANNISTER**
Apologetics
- **JOHN BERTONE** B.A. (Southeastern University) M.Div. (McMaster), Th.M. (Princeton), Ph.D. (St Michael's College, Toronto)
Biblical Studies
- **JOHN BOWEN**
Professor Emeritus of Evangelism
BA (Oxford 1969) MA (Oxford 1972),
Dip. Th. (Trinity Bristol, 1977), D. Min. (McMaster 1999)
- **BRIAN BUTCHER**
Patristics
- **TIMOTHY CONNOR**
Theology
- **ANDREW SEAN DAVIDSON**
Pastoral Theology
- **DAVID DEMSON**
Reformation Studies
A.B., D.Phil.
- **ROBERT KNETSCH**
Theology
- **CATHERINE McNALLY**
Pastoral Theology
- **DANE NEUFELD**
Theology
- **GORDON OESTE**
Biblical Studies
B.A. (North American Baptist College),
M.Div. (North American Baptist Seminary), Ph.D. (St. Michael's)
- **JEANETTE ROMKEMA**
Community Development
B.A. (Calvin College) M.A., Ph.D. (OISE)
- **JONATHAN SLATER**
Theology
B.Sc., B.Ed. (York), M.Rel. (Wycliffe),
Ph.D. (St. Michael's)

EMERITUS

- **JOHN BOWEN**
B.A. (Oxford), M.A. (Oxford), Dip.Th. (Trinity Bristol), D. Min. (McMaster)
- **RICHARD N. LONGENECKER**
B.A., M.A. (Wheaton), Ph.D. (Edinburgh), D.D. (Hon. Wycliffe)
- **THE REVEREND DAVID R. REED**
Diploma in Vocational Ed (NB Institute of Technology), B.A. (Barrington College),
M.A. (Andover Newton)
- **THE REVEREND J. GLEN TAYLOR**
B.A. (Calgary), Th.M. (Dallas), M.Phil.,
Ph.D. (Yale)

ADMINISTRATIVE STAFF



Karen Baker Bigauskas
Executive
Administrator, Manager
Human Resources



Karen Selvaraj
Development
Coordinator



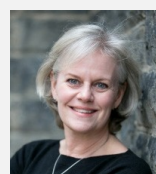
Caitlin Nystrom
Program Administrator



Amy Gabriel
Recruitment Officer



Rob Henderson
Executive Director



Patricia Paddey
Director of
Communications



Terry Bellamy
Maintenance
Supervisor



Steve Hewko
Program Director



Paul Patterson
Director of Finance and
Operations



Connie Chan
Communications
Coordinator



Jeffrey Hocking
Assistant Registrar



Benjamin Paul
Front Desk Supervisor



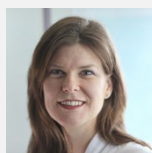
Charles Baik
Recruitment Officer



Barbara Jenkins
Registrar and
Director of
Enrolment
Management



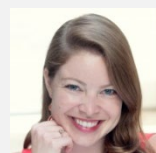
Terry Spratt
Program Technologist



Marion Disselkoen
Development Officer



Shelley McLagan
Director of
Development



Karine White

WYCLIFFE COLLEGE: AN INTRODUCTION



The theological commitments on which Wycliffe College stands are the great affirmations of the Christian Gospel as articulated in the ecumenical creeds and focused anew in the Reformation: the trustworthiness of the Holy Scriptures, the centrality of Jesus Christ, and grace as a foundation of Christian life. For us these emphases, which have shaped the character of the college since its inception, are captured in:

The Six Principles

1. The sufficiency and supremacy of Holy Scripture as the rule of faith.
2. Justification by the free grace of God through faith in Jesus Christ.
3. One Holy Catholic and Apostolic Church, the company of all faithful people among whom the pure Word of God is preached and the sacraments are duly administered.
4. The sufficiency and perfection of Christ's sacrifice once made upon the Cross and the priesthood in Christ of the whole Church, of which the ordained ministry is representative.
5. The historic episcopate, a primitive and effective instrument for maintaining the unity and continuity of the Church.
6. The presence of Christ by his gift in the hearts of all who worthily and with faith receive the Holy Communion.

The aims of the Reformers, from whom these Principles derive, remain highly pertinent for us today. The Reformers wanted to return "to the sources," to hear the Word of God afresh in their time. They wanted to make the hearing of that Word accessible to the whole people of God, and thus to empower the laity for their ministry in the world. Finally, they believed that the great doctrines of faith, grace and justification were not matters just for the ivory tower, but were directly relevant to the pastoral life, for they are best understood as counsels of spiritual freedom, which in turn make ministry in the world possible.

These same commitments have been expressed anew in our Mission Statement.

Mission Statement

To the glory of God, Wycliffe College educates people for practical ministry and theological scholarship in Christ's global church and the world.

The distinctive nature of Wycliffe's ministry can be discerned if we consider some of the phrases in our Mission Statement:

"...within the University of Toronto"

Wycliffe College is situated at the heart of Canada's largest university, an educational "city" covering 51 hectares in downtown Toronto and gathering together over 80,000 students. It is divided into small communities — of which Wycliffe is one — which have distinct identities and purposes. Our University situation affords our students a number of advantages:

- The largest research library system in Canada, and one of the ten largest in North America.
- Access for students in professional and academic graduate degree programs to University course offerings and instructors.

- Hart House, a social and cultural institution located next door to Wycliffe, with athletic facilities, dining rooms, an art gallery, a music room, offices for various student organizations, and other resources.
- Modern athletic facilities, including the nearby Athletic Centre, which administers the most complete fitness and recreation program in Canada.
- Representation in University student government, and opportunities for participation in intramural athletics and student organizations.
- The Koffler Centre, including an immense academic bookstore, a computer store, and student services.

“...serves the educational mission of the Church...”

We approach our educational ministry in a spirit of service to the wider Church, by participating in the Church’s work of understanding, proclaiming, teaching, and applying the Gospel of Jesus Christ. We seek to help Christian people grow in their understanding of God, and we have a particular part to play in the training of lay and ordained leaders for the work of the Church. All our instructors are active Church members, and about half are ordained clergy. Normally our students are members of local Christian congregations.

By history and conviction, we are an Anglican college. All our trustees, the majority of our faculty members, and many of our students are Anglicans. Although Wycliffe is an independent college under the institutional control of its own governing body, we are recognized by the Anglican Church of Canada and relate to it through the Council for Theological Education of the Anglican Ecclesiastical Province of Ontario. The Master of Divinity program is intended primarily for students training for ordained ministry in the Anglican Church, and for this program we have arranged to draw on the resources of dozens of parishes, chaplaincies, and diocesan agencies.

An important feature of evangelicalism is an ecumenical concern, which characterizes our ministry. Our students come from a wide variety of denominational backgrounds, and we welcome and encourage this diversity. Obviously, the clearest feature of this ecumenical concern is our membership in the Toronto School of Theology.

“ by challenging and encouraging those who seek a fuller understanding of Jesus Christ and his transforming power ”

We teach in the conviction that human existence is understood most truly in connection with God’s self-revelation in Jesus Christ, and that to live authentically is “to grow up in every way into the one who is the head, into Christ” (Eph. 4:15). When we teach such subjects as Biblical interpretation, systematic theology, Church history, Christian ethics, pastoral theology, and evangelism, it is not simply to satisfy anyone’s intellectual curiosity. It is to help those who come to us to understand God more truly, and to assist them in developing a rationale for the hope that is in them (I Peter 3:15). Students are called to put to the test not only other people’s theories and assumptions, but their own as well.

Outside the classroom, we assist students in their personal and spiritual growth through a variety of means and experiences, primarily worship, personal relationships, small group experiences,

community and world outreach, and systems of evaluation. The objective of personal formation in Christ is openness and obedience to God, self-awareness, and sensitivity to others.

At Wycliffe, therefore, our goal is not simply to communicate an armored body of inert thought to our students, but to form them in the Reformation pattern of faithful and critical theological enquiry, understood as a ministry of the Church. We try to enlarge their capacity to recognize and to serve the living God at work in the world. We are not seeking students who want their preconceptions reinforced. Those who choose Wycliffe should be willing to be challenged and transformed. In a new key for a new time, our educational endeavour maintains the same priorities which have been characteristic of evangelical Anglicanism at its best: the centrality of Scripture and a “generous

Statement of Moral Vision Community Expectations

We share not only a common intellectual life, but a common moral life as well. We believe that the following virtues are requisite for the high calling of ministerial leadership in Christ’s Church. The College’s goal is excellence in preparing students for lifelong ministries characterised by prayer, study, and personal well-being.

1. We are called to generosity of spirit, mission, and service to others, whether within the College or the broader community outside the academy.
2. We are called to sobriety in thought, word, and deed. This includes avoiding abuse of drugs and alcohol.
3. We are called to follow the norms of sexual behaviour taught by scripture as interpreted by the universal Christian tradition from the earliest church to our evangelical founders.
4. We are called to a life of devotion including private prayer, meditation on scripture, and corporate worship. Ordinands in particular are expected to take part in our chapel worship life.
5. We are called to respect others as outlined in the College Student Handbooks and related University of Toronto Codes of Behaviour, especially with respect to sexual harassment and abuse and refraining from the use of pornography.
6. We are called to honesty, integrity, probity and candour in all academic and non-academic engagements in accordance with the College Student Handbooks and related University of Toronto Codes of Behaviour.

In addition to the Six Principles and Mission Statement, members of the Wycliffe community are expected to honour the College’s character as defined by this vision of our common moral life.



The Toronto School of Theology

Most of our educational programs are conducted in very close collaboration with the other colleges of the Toronto School of Theology, the country's largest ecumenical consortium, of which we are a founding member. Our students have the benefits of both a small, personal community and a sizable, diverse school. Through the TST, students and instructors have the opportunity of studying and working with members of other denominational traditions.

The Member Colleges of The TST Are:

Emmanuel College (United Church of Canada); Knox College (Presbyterian Church in Canada); Regis College (Roman Catholic, Jesuit); St. Augustine's Seminary (Roman Catholic, diocesan); St. Michael's College, Faculty of Theology (Roman Catholic, Basilian); Trinity College, Faculty of Divinity (Anglican Church of Canada). Wycliffe College (Anglican Church of Canada).

Most of the colleges are within a few minutes' walk of each other, a great advantage for sharing library resources and course offerings. The courses offered each year through the TST are open on an equal basis to the students of all the colleges. All courses are scheduled in a common timetable issued by TST.

Affiliated Colleges Are:

Institute for Christian Studies (Reformed Tradition); Conrad Grebel College (Mennonite); Huron Divinity College (Anglican); (NAIITS: An Indigenous Learning Community

Accreditation

Our degree programs are fully accredited by the Association of Theological Schools in the United States and Canada (www.ats.edu). The Toronto School of Theology (TST) and its member schools are accredited by the Commission on Accrediting of the Association of Theological Schools (ATS) in the United States and Canada and the following degree programs are approved:

MDiv, MRE, MA in Ministry and Spirituality, MPS, MSM, MA, MRel (discontinued), MTS, DMin, ThM, PhD, ThD (closed to new admissions)

The Commission contact information is:

The Commission on Accrediting of the Association of Theological Schools in the United States and Canada

10 Summit Park Drive Pittsburgh, PA 15275

Telephone: (412) 788-6505 Fax: (412) 788-6510

Website: www.ats.edu

Origins

Wycliffe College was founded in 1877 by a local Anglican evangelical organization called the Church Association of the Diocese of Toronto. This group, primarily a lay movement centered at St. James'

Cathedral, had been formed in 1873 after a clerical faction in the diocesan synod had campaigned to exclude evangelicals from important diocesan offices and committees. The Association championed the doctrinal points of the English Reformation, and, applying these principles to its immediate context, maintained the rights of the laity in Church governance, simplicity in worship, and ecumenical relations with other Protestant denominations, especially in postsecondary education. It held meetings, published tracts, established a weekly newspaper, involved itself in Church politics, and gave financial support to evangelical clergy and students. Its most lasting contribution was the Protestant Episcopal Divinity School, which first met in the schoolhouse of St. James' Cathedral. Nine adventurous students met under the leadership of the Reverend James Paterson Sheraton, a parish priest from the Canadian Maritimes who had just been appointed the College's principal and first professor.

The school grew rapidly and in 1881 moved into its own building on a site in the area of the University of Toronto. This year was the five hundredth anniversary of the traditional date of the first English Bible, which had been inspired by the teaching of the Oxford priest and professor John Wycliffe. It therefore seemed fitting to name the building "Wycliffe College", and the name was soon extended to denote the school itself. In 1885 the College was affiliated to the University, and in 1889 it became one of the federated colleges. In 1891 the College moved to its present site on Hoskin Avenue, and was formally approved by the Church as an Anglican theological college.

Governance

Wycliffe was incorporated in 1879 for the purpose of "providing for the training of theological students in accordance with the principles of the Reformation as embodied in the Articles of the Church of England." The governing body of the College is the Board of Trustees, which elects its own members. The Wycliffe College Act (1916) gives the College degree-granting powers and gives the trustees of the College the authority to enact by-laws. The Principal is the chief executive officer and the chief academic officer of the College.

Current Board Members:

- Mrs. Carol Boettcher (Chair)
- Ms. Marilyn Sinclair (Vice-Chair)
- Mr. Edmund C. Smith (Vice-Chair)
- Matthew McCormick (Honourary Treasurer)
- The Rt. Rev. Stephen Andrews (Principal)
- Mr. William Benson
- The Rt. Rev. David Edwards
- Ms. Angela Emerson
- Prof. C. Brad Faught
- Rev. Dr. Peter Holmes
- Dr. Roseanne Kydd
- Dr. J. Larry Reynolds
- Mr. David Toyen
- Mr. Beng Wee

The Wycliffe College Hymn

King of Love, O Christ, We Crown Thee

*King of love, O Christ, we crown thee Lord of thought and Lord of will, each demand of thy high challenge dedicated to fulfil,
 we with thee by grace co-workers, till, where human foot hath trod, peoples, kings, dominions, races, own the empire of our God.
 King of mercy, thou hast saved us from the haunting sense of loss, nailing in thy vast compassion sin's indictment to the cross;
 them who love, by thy sore anguish, from the past thou makest free, breathing words of absolution where thou reignest from the tree.
 King triumphant, King victorious, take thy throne our hearts within, lest the might of fierce temptation snare us into mortal sin;
 by thy Spirit's rich anointing grant us power life's race to run,
 till the lure of sense be vanquished, till the prize of God be won.*

Book Of Common Praise, Hymn #451

Text: Charles Venn Pilcher (1879-1961), © F .E .V . Pilcher

ACADEMIC PROGRAMS

Professional Graduate Programs

Wycliffe College currently offers the following programs at the Professional Graduate level, conjoint with the University of Toronto: Master of Divinity, Master of Divinity for Pioneer Ministries, Master of Theological Studies, and Master of Theological Studies in Development. We also offer three non-conjoint programs: Diploma in Christian Studies, Certificate in Anglican Studies, and Certificate in Missional Leadership and Formation.

Master of Divinity (M .Div.)

The Master of Divinity is a three-year program (30 credits) intended primarily for persons training for ordained ministry. The program is designed as a process of theological, personal, and vocational formation, together with the development of professional competencies. It is intended to assist those who want to grow in their understanding of God and their knowledge of themselves. The College supports the church in its processes of vocational discernment, but ordination and employment in the church rests solely with the ecclesial authorities.

Students are encouraged to take the entire program on a full-time basis whenever possible (four to five courses a term in the fall and spring for three years, plus one or two courses in each of the two intervening summers), but part-time studies are allowed. There is a minimum requirement of two terms as a full time student (4 or more courses). These semesters do not necessarily have to be concurrent. Alternatively, if a student has maintained at least three courses per fall and winter semester from the beginning of their program and been actively involved in chapel groups and the life of the college this will also fulfill the residency requirement. The degree is awarded conjointly with the University of Toronto.

Field Education is an important component of the M.Div program and there are three units of supervised field education. Two units are part of academic courses WYF3010H and WYF3030H. Each

of these courses includes an academic year-long placement requirement of 10 hours per week (September to April). In addition there is a summer internship (WYF3020Y) usually lasting a minimum of three months full-time placement and worth two academic credits. There is also the possibility of completing this internship on a part-time basis over six months. All placements are organised with and through the Director of Field Education.

Master of Divinity Program Requirements

Introductory courses normally taken in the first year for full-time students	Credits
WYP1111H Life Together: Christian Formation	1
WYB1008H Intro to Old Testament I	1
WYB1009H Intro to Old Testament II	1
WYB1009H Intro to Old Testament II	1
WYB1501H From the Gospel to the Gospels (NTI)	1
WYB2660H Who is Jesus? (NTII)	1
WYP1610H The Church, The Faith, and our World	1
H1010H History of Christianity I	1
WYP2672H Evangelism Remixed	1

Core courses normally taken following introductory courses	Credits
WYT1101H Systematic Theology I	1
WYT2101H Systematic Theology II	1
WYTXXXXH Theology Elective	1
WYP2301H Basics of Preaching	1
WYP1501H Boundaries & Bridges: Care of Self, Care of Others	1
WYT2505H Intro to Anglican Theology OR Denominationally appropriate course	1
WYP2118H Anglican Liturgics OR Denominationally appropriate course (normally WYP2111H Christian Worship: Foundation, Framework and Freedom)	1
WYH2532H The Protestant Reformation	1
WYF3010H Theological Integration Seminar (inc. field placement)	1
WYF3020Y Internship (May-July between yr 2 & 3)	2

Core courses taken in 3rd year

WYF3030H Parish Leadership and Ministry (inc. field placement)	1
--	---

ELECTIVES

MODULE COURSES

In addition to the above listed core courses, students can choose one of five streams. Please see the MDiv worksheet posted on the Wycliffe website or request a copy from your advisor or the registrar's office to view details of these streams.

HONOURS PROGRAM

M.Div. students who have attained an A- average or better in their first year may opt for the Honours track for the remainder of their program and should maintain an A- average in order to graduate with an M.Div. (Hons.) degree. These students are required to take a biblical language course and write a research paper. In the second year a credit honours colloquium course called The Image Of God is held which includes an original group research project.

PRINCIPAL'S LIST

M.Div. students not in the Honours program who maintain an A- standing each year will be recognized by being included on the annual Principal's list.

COMPREHENSIVE EXAMS

At the completion of two years of theological study, all M.Div. students will take comprehensive assessment exams -- written and oral -- that involve content retention and the integration and pastoral application of major aspects of their program.

NON-ANGLICAN M .DIV . STUDENTS

Non-Anglican divinity students are not required to take Anglican-specific courses such as Anglican Liturgics & Intro to Anglican Theology. They may substitute these courses for denominational requirement courses or electives.

LANGUAGE PREPERATION FOR DOCTORAL STUDIES

Those M.Div. students who are considering doctoral studies after the completion of their degree should keep in mind the language requirements for doctoral studies. The current admission requirements for the Ph.D. in Theological Studies at the Graduate

Centre for Theological Studies are as follows:

Students applying to the program will be required to provide evidence of reading competence in one ancient or modern language necessary for their research. (Competence is normally demonstrated by the satisfactory completion of a two- semester course at the university level within the last four years.) Additional language preparation will be required for admission in cases where the primary sources for the proposed area of study are in a language other than English. In such cases, applicants may be required to provide evidence of competence in more than one language and/ or reading proficiency in one language. (Proficiency in a language is a higher level of reading ability, consistent with that which is normally acquired by the satisfactory completion of a four-semester course in the language at the university level within the last four years.) Applicants proposing to focus their research on a biblical text, for example, would be required to demonstrate proficiency in the

language of their primary focus (Greek or Hebrew), and competence in either the other biblical language or a modern research language.

Once admitted, all PhD students may need to give current evidence of their facility in their research language(s) by taking a TST Language Exam or by passing a TST Language Course (prior to registration in September).

Language courses can be taken as free electives during the M.Div. program. This choice of courses should be made in consultation with, and approved by, the student's faculty advisor.

MASTER OF THEOLOGICAL STUDIES (M .T .S .)

The Master of Theological Studies is a two-year program (20 credits) ideally suited to students who are seeking a general introduction to Christian scholarship and a deepening of the theological foundations of their faith.

Students intending to develop a more systematic theological context in which to understand their lay ministry, and to develop competencies in the practice of ministry, should choose courses distributed over several disciplines. They are also encouraged to take "The Church, The Faith, and Our World" (WYP1610).

The M.T.S. can be used to qualify for doctoral study in the Toronto School of Theology for candidates who achieve an "A-" average and develop an academic focus with thesis during their program. Students who are using the M.T.S. as preparation for doctoral studies or other advanced degree work should plan their program with a view to specialization in their chosen area.

The Master of Theological Studies can be taken entirely on a part-time basis over the course of eight years. The degree is awarded conjointly with the University of Toronto, and is recognized by the Toronto School of Theology as a degree leading to doctoral studies.

Master of Theological Studies Program Requirements

REQUIRED COURSES	Credits
WYB1008H Introduction to Old Testament I	1
WYB1009H Introduction to Old Testament II	1
WYB1501H From the Gospel to the Gospels (NT I)	1
WYB2660H Who is Jesus? (NT II)	1
H1001H History of Christianity I	1
WYP1610H The Church, the Faith, and Our World or WYT1106H Introduction to Missional Theology	1
WYT1101H Systematic Theology I	1
WYT2101H Systematic Theology II	1
WYTXXXXH Theological Elective	1
*Summative Exercise (2 or 3 credits)	2 or 3
Free Electives	8 or 9
TOTAL COURSES	20

**Two (or three) credits at the end of the program are required as a summative exercise. The following five options are available:*

- a) **An integration paper of about 40 pages.** The paper will be a theological reflection drawing on interdisciplinary resources.
- b) **A survey of literature, about 40 pages in length.** The paper will identify a specific topic in the area of theological studies, and will identify, discuss, evaluate, and relate significant books, articles, and other resources. An interdisciplinary awareness should be reflected.
- c) **A field-based project.** A field-based research project will be conducted with the agreement of, and according to the standards set by, the Director of Field
- d) **Education of the College.** The results of the findings will be incorporated in a substantial essay.
- e) An extended research paper about 40 pages in length. The paper will report on a significant project of academic research. Normally the paper will present, support, and develop a thesis concerning a specific topic, and will therefore be similar to a thesis, but on a smaller scale.
- f) **A thesis of about 60 pages (3 credits).** The paper will present, support, and develop a thesis concerning a specific topic, and should reflect general competence in theological studies. Students using the M.T.S. as preparation for doctoral studies should choose this option. It is only available for those students who have attained an A- average in their course work.

Complete guidelines for the M.T.S. summative exercises can be found on our website.

M .T .S . – URBAN & COMMUNITY DEVELOPMENT STREAM

The Master of Theological Studies in Development equips Christian leaders with passion and skills to serve God's people, in development.

The program:

- offers both academic and practical training (includes urban and overseas experience)
- connects students to people and organizations responding to global poverty and injustice.
- builds on a background in the humanities, business, sciences and technology or other disciplines for work in development.
- provides a solid theological education and a Christian world-view that honours and empowers others.

Program Requirements

BIBLICAL, THEOLOGY, & HISTORY COURSES (9 credits)	CREDITS
WYB1501H From the Gospel to the Gospels (NTI)	1
WYT1101H Systematic Theology I	1
WYT2625H Theologies of Poverty & Development	1
WYB1008H Intro to Old Testament I	1
<i>One of the following</i>	
WYH1010H History of Christianity I	1
WYJ2501H Research Methods in Development	1
WYH2311H History of Missions & Development or Approved alternative	1

One of the following

WYT1105H Teaching the Faith	1
WYP1609H Facilitation & Workshop Design	1
WYP1610H The Church, Our Faith, and the World	1
<i>One of the following</i>	
WYB1009H Intro to Old Testament II or Approved alternative	1
<i>One of the following</i>	
WYB2660H Who is Jesus? (NTII) or Approved alternative	1
<i>One of the following</i>	
WYT2101H Systematic Theology II or Approved alternative	1
DEVELOPMENT FOUNDATIONS (4 credits)	
WYP1615H International Development: Issues	1
WYP1616H Community Development: Theory	1
WYP2623H Urban Poverty & Theology	1
Course in Development Foundations (see guidelines)	1
DEVELOPMENT PRACTICE (3 credits)	
<i>Choose 3 of the following</i>	
WYP1617H Community Assessment and Design	1
WYP1609H Facilitation and Workshop Design	1
WYP2641H Community Development: Tools & Practices	1
WYP1621H Leadership & Management in Non-Profits	1
WYP1618H Grants and Fundraising	1
OTHER PROGRAM REQUIREMENTS	
Experiential Learning Module (4 to 7 months)	2
Summative Exercise	2
TOTAL COURSES	20

Regulations

Regulations for the Master of Divinity and the Master of Theological Studies programs are published in the TST Basic Degree Handbook. To read more about these degree programs, including detailed descriptions of the degrees offered, admission requirements, grading, etc., please visit the following link:

<http://www.tst.edu/academic/resources-forms/handbooks>

Non-Conjoint Programs

Wycliffe offers three non-conjoint programs; the Diploma in Christian Studies

(Dip.C.S.), the **Certificate of Anglican Studies (C.A.S.)**, and the **Certificate in Missional Leadership & Formation (C.M.L.F.)**. These are granted exclusively by Wycliffe College, and students registered in these programs are not University of Toronto students, nor will they have access to all of the resources of the University of Toronto.

Diploma in Christian Studies (Dip .C .S .)

The Diploma in Christian Studies is a graduate diploma program (ten master's-level credits) intended for lay people who wish to increase their knowledge of the Christian faith, develop skills in practical ministry, and integrate their faith with cultural and professional endeavors. This one-year program normally requires at least a three-year undergraduate (bachelor's) degree in order to be considered for admission.

Students admitted to this program will discuss their educational objectives with an advisor before making course selections. After the completion of ten credits, students who possess an undergraduate degree may opt to graduate or to apply for admission into a master's degree program. Students who have completed ten credits will not be allowed to register for more courses until they have been accepted into a master's program.

The Diploma in Christian Studies can be done entirely on a part-time basis over the course of six years.

Program Requirements

REQUIRED COURSES	Credits
WYB1008H Introduction to Old Testament I	1
WYB2660H Who Is Jesus (NT II)	1
H1001H History of Christianity I	1
WYP1610H The Church, the Faith, and Our World or WYT1106H Introduction to Missional Theology	1
WYT1101H Systematic Theology I	1
Free Electives 5	5
TOTAL COURSES	10

NOTE: Students thinking about a Master's degree program should consider taking courses required for the program to which they may transfer (e.g. M. Div., M.T.S.). Please note that in order to transfer from the Dip.C.S. into a Master's degree program, a student must possess at least a three-year undergraduate degree.

Certificate in Anglican Studies

The Certificate in Anglican Studies is a one-year program designed for students seeking ordination in the Anglican Church who already have a degree in theology from another tradition, or a degree from Wycliffe other than the M.Div. (such as the M.T.S.). The purpose of the program is to acquaint the student with the essential elements of theological study in the Anglican tradition and to prepare them for ministry in the church through field education courses.

Program Requirements

REQUIRED COURSES

WYT2505H Introduction to Anglican Studies	1
WYP2118H Anglican Liturgics	1
WYF3010H Theological Integration Seminar	1
WYP2301H Basics of Preaching	1
WYP1501H Boundaries & Bridges: Care of Self, Care of Others	1
WYF3030H Parish Leadership & Ministry	1

ELECTIVES (select two from):

1. Evangelism
2. Reformation
3. Sacraments
4. Preaching

TOTAL COURSES 8

Certificate in Theological Studies

The Post-Baccalaureate Conjoint Certificate in Theological Studies provides university graduates with a means to complete a limited sequence of courses in Christian studies that will give them a strong educational foundation in the field. It is intended for university graduates in fields other than Theological Studies who are interested in applying for admission to other programs in Theological Studies, but who lack the academic foundation.

Program Requirements

REQUIRED COURSES

Old Testament / Hebrew Scriptures
New Testament
Theology (systematic theology, historical theology, dogmatic theology)
History of Christianity

A foundational course in another area (such as theological ethics, philosophy of religion, comparative theology, apologetics, pastoral or practical theology, spirituality, liturgics, etc.) This additional foundational course will be decided by the student in consultation with an academic adviser, on the basis of his or her prospective area of MA studies, and special academic interest.

ELECTIVES

Two additional courses will be taken at an advanced SEUG level (with TST course codes numbered in the 2000s and 3000s), in order that students can achieve degree-level expectations in depth of knowledge.

TOTAL COURSES 7

Certificate In Missional Leadership & Formation (C.M.L.F.)

The Certificate in Missional Leadership & Formation is a cohort-based graduate program to help leaders in the church engage with and learn from some of the most recent work in the areas of

missional leadership and formation. Working as part of a cohort with others who have been in ministry for 3 years or more, the program is designed so that current church leaders can develop and strengthen their leadership skills while continuing in their full-time ministry positions. The program consists of four courses taken together with their cohort and concludes with a project or written thesis. This program is offered subject to sufficient enrollment to form a cohort.

Faculty Advisors

Students are expected to meet regularly with their faculty advisors, who offer academic advice and who assist in choosing elective courses. Advisor lists will be posted outside the Registrar's office the first week of classes.

The Director of Professional Graduate Degree Studies exercises authority regarding the transfer of credits from another institution or the waiver of requirements in special circumstances.

Evening Courses

Foundation-level courses are given in the evenings in both fall and spring terms. They are available in a rotation over three to four years. Students may take dinner in the College Refectory at 6 p.m. for a reasonable charge, by reserving with the College receptionist before 10:00 on the morning of the class. Students who are registered for evening courses may make arrangements with the College for overnight accommodation at a reasonable rate.

Auditors

Those wishing to audit courses (that is, attend courses without undertaking assignments or seeking credit) must be academically qualified and must have the permission of the instructor. Courses taken as audit may not be converted to credit courses at a later date. An audit registration form is available online or from the Registrar. A fee is prescribed for those who are not already registered as full-time students at TST.

Visiting Students

Students who are enrolled in a master's-level program at an ATS accredited seminary may take a course with the permission of their host seminary and Wycliffe College. The applicant must submit a Visiting Student application form, and a letter of permission from their seminary of enrollment.

Academic Degree Programs

Wycliffe College participates in the advanced degree programs administered by the Graduate Centre for Theological Studies. Full descriptions and specific requirements of these programs are set out on the Toronto School of Theology website, www.tst.edu. Any changes to Academic Graduate programs are posted on the TST website.

Academic doctoral programs

- The Doctor of Philosophy in Theological Studies (Ph.D.) program trains persons in advanced specialized research and prepares them for post-secondary teaching. The degree is conferred conjointly by Wycliffe College and the University of Toronto. Admission to this program is now closed. This program requires one or more years of coursework, qualifying examinations, and a major research thesis of not more than 80,000 words.

Professional doctoral program

- The Doctor of Ministry (D.Min.) program assists students in developing a critical and comprehensive understanding of the theory and practice of ministry. It is taken by persons who are currently engaged in the practice of full-time ordained or lay ministry; the specialized research which they undertake during the program usually relates to their particular ministry base. The degree is conferred conjointly by Wycliffe College and the University of Toronto.

Master's programs

- The Master of Theology (Th.M.) degree is a second theological master's degree; a basic theological degree is prerequisite to entrance. It is designed to deepen students' knowledge of theology and to prepare them further for advanced research or pastoral ministry. It can be taken entirely on a part-time basis, and is ideal for continuing education. Students can choose one of two options for the Th.M. Option 1 requires six courses, knowledge of two research languages, and a thesis of at least 12,500 words; option 2 requires eight courses with an extended paper (related to one of the courses taken) of 8000 words. The former option should be chosen by students intending doctoral study. The degree is conferred conjointly by Wycliffe College and the University of Toronto.
- The Master of Arts in theology (M.A.) degree is a first master's program in theology, even though it is classified at TST and administered as an advanced degree. It fosters graduate-level competence in several areas of theological study and specialized knowledge of a topic chosen for a thesis. Program requirements include eight courses taken a year of full-time residency plus six elective courses taken subsequently, knowledge of a foreign research language (students in the Biblical department need more languages), and a thesis of at least 12,500 words. The M.A. is a non-conjoint degree and is conferred by the University of St. Michael's College. A new, conjoint M.A. program is in the application process, and will replace this program once this process has been successfully completed.

Wycliffe's academic graduate degree community

Academic Graduate programs are administered by the Toronto School of Theology, but the TST itself is a federating institution and has no students. To enter a program, students must choose a participating college in which to register. Each college seeks to support its Academic Graduate students with opportunities for fellowship, worship, financial aid, and teaching assistantships. Wycliffe will be particularly attractive to those who will feel at home in an evangelical Anglican community with the faith commitments, the love of learning, and the zeal for research characteristic of the best of the sixteenth-century theological renaissance that is called the Reformation.

All TST resources are open to all TST Academic Graduate students on an equal basis, regardless of their college of registration. They may use any of the libraries, and they may seek instructors for reading courses and a supervisor for their thesis at any of the colleges.

Wycliffe has a substantial Academic Graduate enrollment; currently about 100 students are registered in Academic Graduate programs. A student community of this size is ideal: it is small enough to be personal and friendly, and large enough to support good conversation and a rich theological life together. Students are diverse in respect of age, gender, race, mother language, academic interests, and denominational affiliation.

College resources and activities described elsewhere in the Calendar, including residence accommodation, worship services, social and recreational facilities, subsidized lunches, community programs, retreats, and athletic organizations, are available to Academic Graduate students on the

same basis as to basic degree students. In addition, Wycliffe Academic Graduate students enjoy membership in the Senior Common Room, located on the main floor of the building, offering study carrels, refrigerator, telephone, magazine subscriptions, and an adjacent washroom. The Wycliffe Graduate Society (WGS) sponsors various social events during the year, including guest speakers, a dinner for students and spouses, special lunches, and theological discussions and colloquia. Locker space is available for Academic Graduate students at the Graham Library, as well as a limited number of lockers in the Senior Common Room.

Wycliffe's role in academic graduate degree studies

1. For a doctoral student, the chair of the program supervisory committee will normally be a Wycliffe professor. The advisor for Th.M. and M.A. students will be Wycliffe's Academic Graduate Degree Director or a Wycliffe professor appointed to advise.
2. Wycliffe Academic Graduate students are eligible to apply for financial assistance from the College.
3. Wycliffe attempts to provide Academic Graduate students with opportunities to develop their teaching skills and to gain experience in a variety of teaching situations. Each year the College awards a number of teaching assistantships for courses in its basic degree program. Usually the College's introductory course in New Testament Greek is taught by an Academic Graduate student. The College is in contact with other regional theological institutions which on occasion request a recommendation for an Academic Graduate student to teach a course. Academic Graduate students may also be asked to teach short-term adult study classes in local churches.

Further information

Authoritative detailed information is available at the TST website, www.tst.edu. Enquiries about the D.Min. program should be directed to the Director of D.Min. Studies at TST. Enquiries about the Academic Graduate Degree programs should be directed to Wycliffe's Academic Graduate Degree Director, Professor Marion Taylor, who can be reached at marion.taylor@wycliffe.utoronto.ca or through the college switchboard. Questions about studies in specific areas may be addressed to

the faculty member involved. The Director of the Graduate Centre for Theological Studies is Professor Colleen Shantz and his email is gcts.director@utoronto.ca. Any changes to Academic Graduate programs will be posted to the Toronto School of Theology website.

Admissions & Application Procedures

Wycliffe College welcomes men and women of all races and origins into its programs. We specifically welcome applicants with Christian commitment, academic ability, experience in Christian service, self-discipline, openness to constructive criticism, and sympathy with the ethos and educational goals of the College and the Toronto School of Theology.

Application forms for admission to Professional Graduate Degree programs, may be completed online through the Wycliffe College website (www.wycliffecollege.ca) Application to Academic Graduate Degree programs is through the TST website (www.tst.edu.)

International Students

Wycliffe's student body is increasingly international in character including students from the USA as well as from various overseas countries. International applicants must possess the same academic prerequisites as Canadian applicants, as outlined above in the Admissions and Application Procedures.

Students whose first language is not English must take the Test of English as a Foreign Language (TOEFL) including the Test of Written English (TWE). Basic Degree students require a TOEFL score of 580 and a TWE score of 5.0 (paper-based test) or 237 and TWE of 5.0 (computer-based test). Advanced Degree students require a TOEFL score of 600 and a TWE score of 5.0, or on the computer-based TOEFL, a score of 250.

For more information on the TOEFL and TWE see: www.ets.org/toefl. The institution code for Wycliffe College is the same as that used by the University of Toronto: 0982.

All international students who have been accepted to study at Wycliffe College must obtain a student visa. At the present time the following minimum documentation is required:

1. A valid passport.
2. An official letter of confirmation of admission from Wycliffe College stating the program, the registration deadline and the duration of the program.
3. Proof of adequate funds to live and study in Canada - may be in the form of a bank statement, student loan documents, scholarship and bursary awards, or pledges of support from other organizations.

Students from outside Canada must arrange for their visa through a Canadian embassy, high commission or consulate, before departing for Canada. This should be done several months in advance of the proposed travel date. Students should check with their local visa office as additional documentation may be required, such as evidence that they plan to return to their country of origin, certificate of medical clearance, etc. Visit the Immigration Canada website: www.cic.gc.ca for more information.

Opportunities for employment for those in Canada on a student visa are strictly controlled by government regulations. Spouses may also apply for a work permit upon entry to Canada. New rules governing off-campus work permits for international students are in effect from 1 June 2014. See <http://www.cic.gc.ca/english/study/work-offcampus.asp> for more information. If you have questions about the work permit, contact the TST registrar, **Diane Henson**, at diane.henson@utoronto.ca.

International students (including Americans) are required to enroll in the University Health Insurance Plan (UHIP). Information is available from the Accountant's Office, or on the following website: www.uhip.ca.

Other helpful information can be found on the University of Toronto's International Student Centre's website: <http://www.cie.utoronto.ca>. This centre provides information and support to international students in order that they may make a smooth transition to life in Canada and studies at the University of Toronto.

Professional Graduate Degree Programs

Academic Requirements

The Professional Graduate Degree programs are all at the master's level, including the one-year Diploma in Christian Studies. Applicants are required to have at least a three-year undergraduate degree from an accredited university, or from a TST- approved Bible College, in order to be considered for admission. A minimum average of "B-" (70%) is normally required. Professional Graduate Degree applicants may apply to study on a full-time (4 to 6 courses) or a part-time (1 to 3 courses) basis.

Special Status Students

A limited number of spaces are available in the Master of Divinity stream for students who have not completed an undergraduate degree, but who have completed the equivalent of one year of university undergraduate courses with at least a "B-" (70%) average, normally within the previous five years. Applicants must also have the sponsorship of a bishop in the Anglican Communion. A written endorsement must be submitted by the Bishop or diocesan representative, addressed to the Basic Degree Director at Wycliffe College. Further details concerning this letter may be obtained from the Admissions Office. Space is limited by our accrediting standards and by our agreement with the Toronto School of Theology and the University of Toronto. Normally, only one or two full-time places become available each year. Students who are admitted in this category will be considered 'special students' until they have successfully completed ten credits of study at Wycliffe College, after which these courses will be transferred to the Master of Divinity program. The limit for admitting students in this category is set by our accrediting body, the Association of Theological Schools.

Application Procedure

In addition to filling out the Application for Admission to the Professional Graduate Degree Programs online, the following supporting documentation is required:

1. REFERENCES

On the application form, you are asked to provide the names and mailing addresses of three people well acquainted with you, who have agreed to provide letters of reference for you. One referee should be a member of the clergy, and another should be able to comment on your academic ability. If you are not well acquainted with any of your former university professors, please attempt to choose someone who has taught you in some capacity, or can speak to your ability to synthesize information and communicate clearly, both verbally and in writing. A reference form will be sent by email or through standard mail directly to each of these three people. Within two weeks of submitting your application to Wycliffe College, please contact each referee to ensure that the request has been received and will be returned shortly.

2. OFFICIAL TRANSCRIPTS

Original, official transcripts of all university work to date must be sent directly from the institution(s) where you studied to: The Admissions Office, Wycliffe College, 5 Hoskin Avenue, Toronto, Ontario, M5S 1H7 CANADA. Transcripts issued to the student will not be accepted.

A non-refundable application fee of CDN \$50 made payable to Wycliffe College should be mailed c/o the Admissions Office. It is also possible to pay by credit card by contacting the Admissions Office. If your native language is not English and you do not have a degree from an accredited university where English is the language of instruction, you must take the TOEFL. A

minimum TOEFL score of 580 and TWE

– 5 on the paper-based test or 237 and essay writing – 5 on the computer-based test is required in order to be considered for admission to Wycliffe. An official transcript with your results must be mailed directly to the Admissions Office at Wycliffe.

Applicants to the Master of Divinity and the Master of Theological Studies Development program will be interviewed as a final stage of the application process. Local applicants will be interviewed at Wycliffe College by the Admissions Committee. Alternate arrangements for an interview will be made for applicants living at a distance from the College.

Application Deadlines

Students are encouraged to submit their application by May 31 in order to guarantee full consideration for admittance to the September academic session. Those who submit applications following this date may be considered on a rolling basis.

November 1 is the professional graduate degree application deadline for January admission, again with early application recommended. Letters of reference and university transcripts may arrive up to one month following the above deadlines. It is the applicant's responsibility to ensure that the supporting documentation is received on time.

Offer of Admission

Wycliffe College's admissions process works on a rolling basis. This allows an applicant to submit his/her application form at any time. If the applicant meets the school's standards, an offer of admission is made immediately if there is still space available.

Academic Graduate Degree Programs

The Academic Graduate Degree admission requirements are set out on the Toronto School of Theology website: www.tst.edu.

Applicants to an Academic Graduate Degree Program at Wycliffe College must complete an application form online:

The application for admission to the Toronto School of Theology, which sets forth the applicant's academic background and objectives. This form and a CDN \$120 application fee must be sent directly to the Graduate Centre for Theological Studies at the Toronto School of Theology. The GCTS also requires the following supplementary documentation:

1. Statement of Intent

The applicant must submit a statement not exceeding 750 words outlining his or her academic interests and academic purposes. Ph.D. applicants will be required to identify the nature of the research topic they would like to pursue at TST, along with their methodological and theoretical approach(es). Ph.D. applicants must also identify graduate TST faculty member who could support their research, and should indicate how their previous academic studies and language preparation have prepared them for this research area. A brief 2-3 page curriculum vitae may be submitted by all applicants. The Statement of Intent is to be attached to the online Application Form as a PDF file. The CV may also be attached to the online Application Form.

2. Writing Sample

All Ph.D. applicants must submit an academic writing sample (between 20-50 pages) as part of their application. The writing sample is to be attached to the online Application Form as a PDF file.

3. Evidence of Facility in English (for applicants whose first language is not English)

This evidence may be either (a) graduation with an Arts degree from a University where the language of instruction and examination is English; or (b) a satisfactory score in the Test of English as a Foreign Language (TOEFL), the International English Language Testing System (IELTS) Academic version, or the Certificate of Proficiency in English (COPE); or (c) a grade of B in the advanced (level 60) Academic Preparation course in the English Language Program of the School of Continuing Studies of the University of Toronto, or equivalent standing at a comparable institution. For those who take the internet-based test, a total score of 93 is required, with a minimum of 22 on the writing section and a 22 on the speaking section. A score of 580, with a 5.0 in the Test of Written English (TWE) is the minimum requirement for those who take the paper-based TOEFL. To request a registration package for TOEFL and TWE examinations, please write to: TOEFL/TWE Services, P.O. Box 6151, Princeton, New Jersey, U.S.A. 08541-6151 or telephone (609)951-1100 (or use the hyperlinks indicated here). The TST institution code 0655 and the department code 99 should be used. The TOEFL Bulletin of Information and Registration Forms can be obtained in a number of cities outside the U.S. through American embassies or consulates, or offices of the U.S. Information Services (USIS). The minimum IELTS score required is 7.0 (Academic) with no component below 6.5. Only the Academic version of the IELTS test will be accepted. The minimum MELAB score required is 85. The minimum COPE score required is 76, with at least 22 in every component and 32 in the writing component.

Official Transcripts

1. Original, official transcripts of all university work to date must be sent directly from the institution(s) where you studied to the Admissions Committee, c/o Graduate Centre for Theological Studies, Toronto School of Theology. Transcripts issued to students or photocopies will not be accepted.
2. Academic References
Two letters of academic reference are to be sent directly to the Admissions Committee, c/o Graduate Centre for Theological Studies, Toronto School of Theology. References issued to students or photocopies will not be accepted. TST does not provide a letter of reference form but asks that referees write a letter in which they comment candidly on the candidates' qualifications to pursue and complete graduate studies.
3. GRE Scores (optional)
Applicants may submit GRE scores to support their applications. The Toronto School of Theology's institutional code is 0534.

All application materials are to be sent to the following address: Admissions Committee
C/O Graduate Centre for Theological Studies Toronto School of Theology
47 Queen's Park Crescent East Toronto, Ontario, M5S 2C3 Canada
Application Deadlines (information correct as of June 2019)

Application deadlines for Academic Graduate Degree programs (September 2020 entry) have not yet been set, but the process is expected to open in October 2019. When these are available, they will be published on the TST website.

N.B.: Please direct all enquiries concerning the Doctor of Ministry program to the D.Min. Program Director at the Toronto School of Theology. Tel. (416) 978-4039 or www.tst.edu.

Registration

Registration information for the upcoming academic year is mailed to all incoming and returning students in early July. Students register for courses on ROSI, the University of Toronto Student Information System, through ACORN (Accessible Campus Online Resource Network, www.acorn.utoronto.ca, the student web service). Use of ACORN means that the student agrees to abide by all academic and non-academic rules and regulations of the Toronto School of Theology and Wycliffe College, and to pay academic and incidental fees according to the policies and requirements that apply. Reading and research courses, comprehensives, theses, and audit courses are NOT registered through ACORN. Registration forms, which are available from the Registrar and on the Wycliffe website, must be completed in these instances.

Students in non-conjoint programs do not have access to ACORN, and all courses will be registered through the Registrar's Office.

Course Selection

All courses are published and regularly updated on the TST website (www.tst.edu). Students entering a program are assigned a faculty advisor, with whom they should consult about their course selection. The advisors will attempt to advise and guide their advisees as much as possible. It is, however, ultimately the student's responsibility to ensure that all degree or diploma requirements are fulfilled.

Continuing Enrolment

Students who decide not to register for any new courses during an academic year, must elect either to withdraw from studies or to continue their enrollment. If they have not made this choice by September 30, and have not paid any required fees, they will be deemed to have withdrawn from studies. Two categories of continuing enrollment are recognized:

1. Maintenance of Registration

This category applies to students who are actively involved in academic work towards the degree but are not registering for new coursework. Such students enjoy library privileges and are entitled to participate in community activities. This category applies, for example, to students who are completing theses for which they have previously registered. A maintenance fee equivalent to a semester course fee is charged.

Note: This applies to Professional Graduate Degree students only. Regulations for Academic Graduate Degree students may be found in the TST Advanced Degree Handbooks.

2. Leave of Absence

This category applies to students who have successfully petitioned to be placed on leave of absence for personal or medical reasons. Such students do not enjoy student library privileges and are not entitled to participate in community events. No fee is charged.

3. Fees

A schedule of fees is available on both our website and TST website. Fees are set in accordance with the guidelines of the provincial government and in consultation with other TST colleges. Invoicing and payment of fees is administered through the Student Accounts office at the University of Toronto for conjoint degrees. The refund policy for withdrawal from courses and programs is set according to the University of Toronto guidelines. The refund schedule is posted on the college website. Non-conjoint degree students will be invoiced through the Registrar's Office at Wycliffe. TST has retained the services of the University of Toronto's Student Accounts to process student fees for all students whether they are in a conjoint or non-conjoint program.

Academic Information

Key Academic Dates

Fall 2021	
Jul. 19	Course registration for 2021-22 Fall/Winter begins
Aug. 11	2021 Registration Deadline (Minimum payment must be made to complete registration)
Sept. 6	Labour Day: TST Closed
Sept. 7	GCTS Language Exams
Sept. 1	Last Day to Submit signed approval request for academic activities for fall 2021
Sept. 10	GCTS Orientation
Sept. 13	Classes begin for Second-entry Undergraduate (Basic Degree) and Graduate Courses
Sept. 17	Last day to add YF, HF, HY and YY courses
Oct. 1	Automatic Cancellation of Registration for students who have not made the Minimum Required Payment - MRP and are not OSAP recipients (FINCA)*
Oct. 6	TST Agapé
Oct. 11	Thanksgiving Day: TST Closed
Oct. 25-29	Fall Session Reading Week
Nov. 8	Convocation: St. Augustine's Seminary
Nov. 12	Last day to drop YF and HF activities without Academic Penalty
Nov. 14	Convocation: USMC Faculty of Theology
Nov. 20	Convocation: Regis College
Dec. 3	Winter 2022 Registration Deadline (Minimum payment must be made to complete registration)
Dec. 13	TST Classes End
Dec. 14-17	TST Examination Week
Dec. 15	Last Day to Submit signed approval request for academic activities for winter 2022

Winter 2022	
Dec. 3	Winter 2022 Registration Deadline (Minium payment must be made to complete registration)
Jan. 5	Fall Session course grades due on ROSI
Jan. 10	TST classes begin
Jan. 6	Grades seen by students via ACORN
Jan 20	Deadline to register and pay for January GCTS Language Examinations (12:00 pm)
Jan. 14	Last day to add HS and YS courses
Jan. 21	GCTS Language Exams
Jan. 23-30	Christian Unity Week (Sunday to Sunday)
Jan. 26	TST-wide Ecumenical Worship Service
Jan. 28	Automatic Cancellation of Registration for students who have not made the Minimum Required Payment - MRP and are not OSAP recipients (FINCA)*
Feb. 21	Family Day (Provincial Statutory Holiday): TST Closed
Feb. 21-25	Winter Session Reading Week
Feb. 25	Last day to submit ThM and MA (non-conjoint) theses to TST for examination (Spring convocation)
Mar. 1	2022-23 Courses go live on TST Website
Mar. 11	Last day to drop HS, YY, HY and YS courses without Academic Penalty
Mar 30	Last day to defend theses (Spring convocation)
Apr. 8	TST Classes End
Apr. 14	Maundy Thursday (evening classes rescheduled)
Apr. 15	Good Friday (no classes): TST Closed
Apr. 11-14	TST Examination Week
Apr. 14	Last Day to Submit signed approval request for academic activities for summer 2022
Apr. 21	Winter Session course grades due on ROSI
Apr. 26	Winter Session course grades seen by students via ACORN
May 9	Convocation: Wycliffe College
May 10	Convocation: Trinity College
May 11	Convocation: Knox College
May 12	Convocation: Emmanuel College

Time Limits for Completion of Programs

Professional Graduate Degree Programs

M.Div.	Should be completed in eight years.
M.T.S	Should be completed in eight years.
Dip.C.S	Should be completed in six years.
Cert.A.S	Should be completed in six years.

Full-Time/Part-Time Study

(Professional Graduate Degree programs)

A course load of four to six courses per semester is considered full-time study. A student is considered part-time if registered in three or fewer courses per semester. Students in the M.Div. program normally devote three consecutive semesters to full- time studies. These full-time semesters must be completed in the regular academic year (September through April). The whole M.T.S. program can be taken on a part- time basis.

Academic Graduate Degree Programs

The time limit for all advanced degree programs is six years. See the Advanced Degree Handbooks for regulations on extensions and leaves of absence.

Grading Scale

BD Grading Scale

Numerical Grade	Letter Grade Equivalents	Grade Point	Grasp of Subject Matter	Other qualities expected of students
A RANGE: Excellent: Student shows original thinking, analytic and synthetic ability, critical evaluations, and broad knowledge base.				
90-100	A+	4.0	Profound and Creative	Strong evidence of original thought, of analytic and synthetic ability; sound and penetrating critical evaluations which identify assumptions of those they study as well as their own; mastery of an extensive knowledge base
85-89	A	4.0	Outstanding	
80-84	A-	3.7	Excellent	Clear evidence of original thinking, of analytic and synthetic ability; sound critical evaluations; broad knowledge base
B RANGE: Good: Student shows critical capacity and analytic ability, understanding of relevant issues, familiarity with the literature.				
77-79	B+	3.3	Very Good	Good critical capacity and analytic ability; reasonable understanding of

				relevant issues; good familiarity with the literature
73-76	B	3.0	Good	

Grades without numerical equivalent:

- SDF Standing deferred (a temporary extension)
- INC Permanent Incomplete; has no numerical equivalent or grade point
- WDR Withdrawal without academic penalty
- AEG May be given to a final year student who, because of illness, has
- completed at least 60% of the course but not the whole

AD Grading Scale

Letter Grade	Numerical Equivalent	Grade Point	Grasp of Subject Matter	Further qualities expected of students
<i>A RANGE Excellent: Student shows original thinking, analytic & synthetic ability, critical evaluation, broad knowledge base</i>				
A+	90-100	4	Profound & creative	Strong evidence of original thought, analytic and synthetic ability; sound and penetrating critical evaluations which identify assumptions of those they study as well as their own; extensive knowledge base
A	85-89	4	Outstanding	
A-	80-84	3.7	Excellent	Clear evidence of original thinking and of analytic and synthetic ability; sound critical evaluations; broad knowledge base
<i>B RANGE Good: Student shows critical capacity & analytic ability; understanding of relevant issues, familiarity with the literature</i>				
B+	77-79	3.3	Very Good	Good critical capacity and analytic ability; reasonable understanding of relevant issues; good familiarity with the literature
B	73-76	3	Good	
B-	70-72	2.7	Satisfactory at a post-baccalaureate level	Adequate critical capacity and analytic ability; some understanding of relevant issues; some familiarity with the literature
FZ	0-69	0	Failure	Failure to meet above criteria
NCR	none	0		

In addition, the following non-grade course reports may be entered on the student's academic record (ACORN) by the college registrar subject to the policies in subsequent sections (§§A7.9-A7.11).

INC (Permanent Incomplete). This is assigned in special circumstances where course requirements have not been completed but a failing grade is inappropriate or unwarranted (e.g., medical reasons, extenuating circumstances, change in a student's situation). INC carries no credit for the course and is

not considered for averaging purposes. This course report is subject to the conditions contained in §A7.11.5.

SDF (Standing Deferred). This is assigned when a student has been granted an extension to complete the requirements for a course. SDF carries no credit for the course and is not considered for averaging purposes. (See also §A7.11.4.)

WDR (Withdrawn). This is assigned when a student has withdrawn from a course with no academic penalty, subject to the conditions in §A7.11.5.

To obtain credit for a course or dissertation, a grade of at least 70 (B-) must be obtained. If a grade between 65 to 69 is received, the student is entitled to take a supplemental examination or do supplemental work to bring the grade for the course up to 70 (B-). The overall minimum GPA acceptable for graduation and conferral of a degree is 2.7.

Transfer Credits

Students may transfer credits to Wycliffe College for credited work done at another institution which is accredited by the Association of Theological Schools in the United States and Canada (ATS). Transfer credit can only be awarded for courses completed within eight years preceding initial registration at Wycliffe. Normally, a maximum of half the credits required in a program may be transferred from another institution. In order to determine allowable transfer credits, course outlines must be provided to the Registrar's office. Only credits not applied to another degree may be transferred.

Advanced Standing

Advanced standing of up to one year may sometimes be given in consideration of a completed postgraduate degree in theology.

Assignment Extensions

Professional Graduate Degree students are expected to complete all TST coursework by the end of the term in which they are registered. Under exceptional circumstances, with the written permission of the instructor, students may request an extension (SDF = "standing deferred") beyond the term. An extension, when offered, will have a mutually agreed upon deadline that does not extend beyond the conclusion of the following term. An SDF must be requested by the deadline stated in the calendar of academic dates. Request for Extension forms are available on the Wycliffe College website and from the registrar's office. One percentage point per weekday will be deducted on the grade if an extension has not been requested by the stated deadline. An SDF becomes FZ (fail) on the student's transcript if the assignment has not been completed by the agreed upon deadline. Respecting deadlines, obtaining approval of the professor, and the completion of coursework, are the sole responsibility of the student. Professional Graduate Degree students with three or more SDFs on their academic record will not be allowed to register for the following semester.

Appeals

If students consider that they have been wronged in the application of any of the policies relating to their degree or diploma, they ought in the first instance to deal with the professor involved and/or

with the director of the program in which they are enrolled. If they are not satisfied that their appeal has been fairly heard, they may make a further appeal to the College Faculty.

Academic Discipline Policy

In January 2000, Wycliffe College, and all member colleges of TST, adopted the University of Toronto Code of Academic Behaviour including its definitions of offences and sanctions and the normative process for adjudicating cases. The Code of Academic Behaviour is concerned with the responsibilities of all parties to the integrity of the teaching and learning relationship.

Plagiarism is defined as “representing as one’s own any idea or expression or an idea or work of another in any academic examination or term test or in connection with any other form of academic work.” Wycliffe students who commit this offence are subject to severe penalties, up to and including expulsion from the College. Copies of the complete Code are available for reference in the Principal’s Office, the Library or through the University of Toronto webpage at:
<http://www.governingcouncil.utoronto.ca/policies/behaveac.htm>.

Non-Academic Discipline Policy

The Principal may require that a student withdraw from the College if at any time he or she fails to commend himself or herself as a person suitable for membership in the College.

Sexual Harassment

The college has a policy on sexual harassment. Copies can be obtained from the Principal’s Office. The college offers an annual workshop which students are required to attend.

Transcripts

Unofficial transcripts may be sent directly to the student. The request must be made in writing, and a fee is charged. Accounts must be paid up in full before any transcript can be issued.

Students may view their grades on ACORN (www.acorn.utoronto.ca) at any time. Official transcripts bearing the seal of the college may be requested and will be sent directly to the student or the Institution if further studies will continue elsewhere. To request Wycliffe College transcripts, complete the request form found on our website (Current students - Registrar’s office).

Transcripts are not available through ACORN/ROSI and must be ordered through the Registrar’s Office.

Graduation Requirements

Students are solely responsible for meeting the College’s graduation criteria, and must ensure that they have satisfied the College’s course and distribution requirements. The Registrar does not monitor students’ programs, but is always available for consultation.

Faculty advisors also attempt to keep students on track towards their graduation requirements.

Graduation

Before a degree or certificate may be granted, approval must be voted by the Academic Committee on behalf of the Board of Trustees. All debts to the College and the University of Toronto, including the University of Toronto Library, must be paid before the degree or diploma can be conferred.

Confidentiality

Academic records may be shared with the University and the TST, but are not made available to others without the student's permission, preferably in writing. Applications for admission, references, student self-evaluations, evaluations by field education supervisors and College authorities, and other confidential documentation, are available only to the College faculty and staff, and members of the Academic Committee, unless the student specifically directs that they be released to others.

The only documentation which is routinely kept confidential from students themselves are the reference letters supporting their application for admission.

Students who are candidates or postulants for ordination in the Anglican Church are normally expected to consent to the release to their bishop of relevant documentation.

College personnel may share their judgments of particular students with a competent authority such as a bishop or the Principal for reasons involving the educational work of the College or the ministry of the Church. Conflicts occasionally arise when a faculty member feels a pastoral responsibility to the student to keep sensitive information confidential, but realizes a responsibility to report information required by law or as a result of a professional obligation to protect the safety of the individual and the welfare of the college community and of the Church. In such circumstances the faculty member will bring the matter to the attention of the Principal.

Policy on Accommodation

In keeping with the Accessibility for Ontarians with Disabilities Act (AODA) Wycliffe College is committed to providing an equitable and inclusive environment for all members of its community.

The document outlining this commitment is posted on our website:

<https://www.wycliffecollege.ca/about-us/accessibility-services>.

As per the TST Basic Degree Student Handbook we adhere to the following principles and procedures:

Principle of non-discrimination

Under the Human Rights Code of Ontario, every person has the right to equal treatment without discrimination because of disability. The TST and its colleges aim to provide students with disabilities (including physical, learning, and mental health disabilities) the opportunity for the same quality of educational experience as that available to students without disabilities. To that end, the TST and its colleges will comply with their legal obligations by arranging reasonable accommodations for students with disabilities. Accommodations do not alter program or course requirements or expectations.

Procedures

Because each student with a disability has unique needs, he or she should develop an individual plan in partnership with the professionals at Accessibility Services at the University of Toronto. The student initiates this service by registering with Accessibility Services, which is located at 455 Spadina Ave. In requesting accommodation on the student's behalf, Accessibility Services will not disclose confidential information about the student without his or her permission. A student with a disability should not seek accommodation directly with TST college officials or instructors, since they are not trained to determine suitable accommodations, and will usually not be familiar with the University's policies and procedures in this area.

Redress

A student who is denied accommodations recommended by a disability counselor at Accessibility Services, or who has otherwise experienced discrimination as defined by the Human Rights Code, should contact the head of his or her college, or the TST Director. The student also has a statutory right to file a complaint with the Ontario Human Rights Tribunal.

Resources

Library and Information Resources

Library and information resources for students at Wycliffe College are available in the John W. Graham Library, at Trinity College across the road from Wycliffe. Since 2000, the Graham Library has comprised the merged Wycliffe and Trinity College collections. It serves as an important resource for Anglican studies and a base for scholars from all parts of the world. In collaboration and ecumenical cooperation with five other Toronto School of Theology (TST) libraries and the University of Toronto Library (UTL), the Graham Library functions both as a theological and general reference library. It is one of the fifty or so libraries that comprise the University of Toronto Library (UTL) system. In addition, Robarts Library, the central university library, houses internationally recognized theological research collections. These collections are significantly funded and selected by, or in consultation with, the TST libraries. Conjoint students will have automatic access to UTL through their T-Card (U of T student ID); non-conjoint students will not be issued a T-Card but will have community access to UTL through the TST.

Facilities

The Graham Library, with total holdings in excess of 200,000 volumes, occupies all four floors of the renovated arts-and-crafts building of the Munk Centre. There are about 270 reader spaces, including individual open carrels, large study tables, group study rooms, computer workstations, and lounge seating. A well-equipped electronic classroom with 10 workstations is available for instruction in small groups and, at other times, for individual work. All 116 carrels and most other reader spaces have power and data access. The library has more than 200 network ports available for laptop access distributed in carrels, group study rooms, and reading rooms throughout its four floors. Wireless access is also available in most study areas throughout the building. There is now wireless printing available remotely. A media viewing room accommodates the use of digital and other resources by small groups. There is a network printer and a scanner.

Collections

The Graham Library continues to add to its collection of over 80,000 volumes in theological disciplines. Some current areas of specialization that reflect educational commitments are:

1. Biblical: Old Testament and New Testament, Jewish contexts, New Testament Greek, Pauline biography, textual criticism.
2. Historical: English Reformation, Post-Reformation Church of England, English Evangelical Revival, recusant history, missions (Anglican), Anglican Communion and Global Anglicanism, Anglican Church of Canada.
3. Theological: Anglicanism (high church, low church, evangelical), evangelicalism, Anglo-Catholicism, Oxford Movement.

4. Pastoral: Anglican worship and liturgy, homiletics, youth ministry, Anglican theological foundations of education, Lambeth Conferences.

There is a large collection of audio, video (including N.T. Wright, Great Preachers), and onsite CD ROM resources (including Word Biblical Commentary, Luther's Works) to support theological study. The library has a large collection of Anglican parish histories from locations across Canada.

Periodicals

The Graham Library subscribes to over 200 print periodicals in the theological disciplines for scholarly and professional research and for casual reading. These are supplemented by an extensive list of online journals, many of them full-text. Journals which are 10 years old or more are for in-library use only. Most journals which are less than 10 years old may be signed out overnight and are due back the next day by closing.

Electronic Resources

The Library has access to a vast range of electronic resources through the UTL, including online indexes, e-books, e-reference, and e-journals. There are hundreds of full-text theological journals and thousands of full-text theological books (mostly pre-1920). (Remote access to these resources is available.) The library has significant holdings of stand-alone CD-ROM resources in the theological disciplines, broadly defined. The library website includes an Anglican Authors section containing links to primary works, secondary material and other resources relating to authors in the Anglican tradition since 1534. It also has an extensive listing of online resources for students and clergy in the Pastor's Electronic Library. Non-conjoint students do not have full access to electronic resources.

Special Collections

Graham Library's rare book and special collections are principally theological with strengths in Anglicanism. Trinity's foundation SPCK and Strachan Collections, which comprise mainly eighteenth- to nineteenth-century theological works, are complemented by other rare books from both Wycliffe and Trinity, including extensive holdings of the Book of Common Prayer and the W. Speed Hill Collection of the works of Richard Hooker.

Library Services

Information on the full array of borrower services, loan periods for different categories of material, short-term loans, study room bookings, etc., are available on the library website.

Library orientation and bibliographic instruction appropriate to the requirements of students is provided by the Graham Library staff on an ongoing basis. In addition, specially tailored workshops are offered from time to time to meet the needs of students and faculty.

Guides

The library has produced a series of booklets to assist you in your use of our theological resources. These are updated and new titles are added regularly. Full details are available on the library website: <https://www.trinity.utoronto.ca/library>

Hours

For current hours consult the library website: <https://www.trinity.utoronto.ca/library/hours>

For particular arrangements about borrowing and the availability of resources remotely, consult the library website: <https://www.trinity.utoronto.ca/library>

Spiritual Formation

Wycliffe is aware that it is common for students to express a change in their inner or spiritual life when they come to seminary. Questions of how to integrate theology, the academic study of the Bible, papers, exams, formal prayer and questions of vocation with one's faith are part of a student's formation. Wycliffe offers many resources for students' on-going spiritual formation. There are courses in prayer and various branches of spirituality, fellowship groups and spiritual mentors. The Chaplain assists students on a one-to-one basis with discerning God's presence and call in students' lives. Each term there are Quiet Days and Wednesday events on the process of integrating study with faith. Most importantly, there is daily prayer and Scripture in the Chapel with the gathered community.

The Global Church

Overseas Students at Wycliffe

It is our conviction that students from other cultures offer important perspectives for the Western church; we try to ensure the presence of such students as part of our Wycliffe family. The Wycliffe community can only benefit from this type of "cross-fertilization", and we look forward to expanding this further. The Rev. Kim Beard has worked with Wycliffe to organize international internships, particularly in African countries. Wycliffe in its strategic plan has committed to establish healthy and fruitful international relationships with three or four select evangelical church and parachurch organizations in Asia, Africa, North America and in Indigenous territories, whose character is consonant with Wycliffe's and whose regional missional influence is significant.

Online Courses

If you live outside Toronto, either elsewhere in Canada or around the world, you can still get a head start on your theological education by taking up to a semester's worth of online courses through Wycliffe Online. In total it is possible to take up to ten credit courses online as part of the M.Div. program, and it is possible to complete the M.T.S. program completely at a distance. Normally up to nine courses will be offered every year: three per semester, including the summer.

Students from the U.S.A. are only eligible for online courses if there is permission granted by the Office of Higher Education of their home state. Wycliffe will abide by any changes in future regulations at both the state and federal level.

Our course offerings online consist of a mix of required and elective options. Courses follow the academic semester, except those offered in the Summer term which are shorter in duration, usually six to eight weeks.

To take an online course at Wycliffe you need to be registered as a student. The normal process of acceptance for admission has to be followed. Those wishing to take a course, who are not already enrolled at a TST college, should request an application for occasional studies or for a degree program

available on our website. You may qualify to transfer credits obtained through Wycliffe Online to other ATS accredited schools. This is at the discretion of the home college. You have to register as a student at Wycliffe. Online courses are fully transferable into all basic degree programs. Fees for online courses are the same as for on-site courses.

We currently offer the option to complete the Master of Theological Studies entirely online, as well as our Diploma in Christian Studies (which is granted exclusively by Wycliffe College). Full details about course offerings and registration are available on the Wycliffe College Online Course webpage.

Remote Classroom

Another option for students at a distance is Wycliffe's remote classroom. Using webinar technology, Wycliffe is able to offer a limited number of virtual places in selected courses each semester. Those students interested in remote access should contact the Registrar.

Community Life

In Toronto, Canada's largest city, residents and students of Wycliffe College can enjoy a cosmopolitan lifestyle in a relatively safe environment. Built in 1891, the college is an historical landmark at the University of Toronto, Canada's pre-eminent university. As both students and visitors past and present will attest, Wycliffe enjoys an unusually rich community life. All facilities are conveniently located within the college itself, with the exception of the Graham Library, located just across the street.

Senior Student Welcome



Hi Wycliffe Students! My name is Lo Cook and I want to welcome you to Wycliffe College!

I've had the distinct pleasure of attending Wycliffe since Fall 2019, getting a full semester and a half before the world shut down due to a global pandemic. None of us could ever have pictured that this is what life would look like entering my last year here!

While we all could agree that this has been a trying year in many ways, my time at Wycliffe has only emphasized to me the importance of community. I can confidently say that the formation I have gained from the community here has been significant. It has been in community where I have seen the most growth in myself, the most growth in my friends and peers, and the most growth in Wycliffe as an institution.

This year we will continue to build a community of people that works to form one another for the ministry we are called to, no matter our location. While we have been separated physically and that has worn on us, it does not discount that our community is alive and part of the Body of Christ. No matter where we are we are still Christ's. He has not been ignorant of the challenges we face and He is aware of the challenges to come. I urge us all to continue to worship together, even as we are still apart. To continue in our routines, traditions, praise and prayer, even in the midst of an unprecedented time. Even in the uncertainty we face let us continue to turn to the one thing that is absolutely certain, Jesus Christ.

We've learned this year that while we may be sick of zoom there is strength in coming together as a community in Christ. I challenge us all to be prayerful and creative in how we continue to seek out ways to grow in community amongst our churches and at Wycliffe; allowing God to use these challenges we face to grow and shape us for ministry.

If you're up for the challenge we will be holding elections in the fall, looking for people to join Student Council and help us continue to build this community in a way that is appropriate to the calling we have received. We'd absolutely love for you to join us! If you already know you'd be interested email us at WycliffeStudentCouncil@gmail.com!

I look forward to meeting you all, whether that is on zoom or (hopefully) in person. Welcome to Wycliffe College!

Lo Cook

Accommodation

There may be changes to the information provided below because of COVID-19 restrictions. For more information check the college website for updates or email info@wycliffe.utotonto.ca

Wycliffe has a co-ed residence open to full-time theology students and other graduate students who welcome the opportunity to live in a Christian environment. The residence is among the most popular

on the University of Toronto campus, with a strong sense of community fostered by various intramural social and sporting events sponsored by the student council. It is comprised of seventy-three single rooms, the men occupying the second floor and women the third floor of the college. In addition, there are some married students' apartments for full-time students registered at Wycliffe, and dormitory rooms for part-time or commuting students registered at Wycliffe. Two modest guest rooms are also available, booked on a nightly basis. During the summer months the residence is open for continuing Wycliffe students as well as for other students working or studying in Toronto. Due to the architecture and age of the building, the older-style single rooms vary in size and shape, and come equipped with a single bed, closet, desk and chair, bookshelf, telephone, high-speed internet connection, and the option of subscribing to cable television.

During the academic year residents participate in a compulsory meal plan which covers twelve meals Monday through Saturday and accommodates vegetarians. Lunch is provided most days at a nominal extra charge. On Sundays and during the summer months, residents are able to cook their own meals in one of several kitchens located in the residence. Laundry facilities are available on the premises.

Application for Residence

Full-time Wycliffe students who require a single room are normally guaranteed a space in the residence. Those wishing to live in residence should complete the online application for residence at the same time the general application is submitted (see the "Residence" section of the Wycliffe College website). Since the residence fills quickly, prospective residents from other graduate programs are advised to apply during the

Winter semester for the upcoming academic year.

Wycliffe maintains a number of apartments for its married students. Applications for these should be submitted along with the general application. These apartments are in high demand; priority will normally be given to those students coming from outside Ontario who have no means of scouting the local market. For more information, please contact the college.

Additional apartments for married students are available directly from the University of Toronto, which maintains two high-rise units, a twelve-minute walk from Wycliffe College. Applications for these should be made as early as possible. See the "Student Family Housing" section at www.housing.utoronto.ca.

Transportation

Toronto's superb public transit system offers a practical and convenient alternative to owning a car. Bus, streetcar, and subway lines combine to provide efficient access to the college and all amenities of downtown Toronto. Three subway stations are located within a few blocks of Wycliffe. In addition, there are Autoshare and Zipcar stations nearby for renting cars by the hour or day. For those residing outside Toronto proper, the transit system links with a commuter train (GO Transit), for which full-time students qualify at a reduced rate. The college is easily accessible by subway from Union Station (the main train station) and the bus terminal. Pearson International Airport is accessible by public transit (45-60 mins), car (30 mins - traffic dependent), or shuttle via a nearby hotel (60 mins).

Parking

Parking at Wycliffe College itself is very limited, but students do have access to the various U of T parking facilities in the immediate area, which are available at U of T rates. The U of T Parking Office is located at 100 College St., Room 222, and can be contacted at (416) 978-7275.

The College has only a few spaces for day students available on a first come, first served basis. Parking permits are issued at no charge, with priority given to students who travel from outside the city. Students may apply for a reserved parking space when applying for residence. There is a monthly fee. Unregistered cars will be towed at the owner's expense.

Recreational and Social Facilities

Professional Graduate Degree conjoint students at Wycliffe College have access to the recreational and social facilities of the Athletic Centre and Hart House at the University of Toronto. These include a full range of athletic facilities such as swimming pools, weight rooms, squash courts and ball fields. One facility, Hart House, is conveniently located immediately to the south of the College.

Recreational facilities within Wycliffe itself include a tennis court (on which the College's ball-hockey league games are played), billiard and ping-pong tables, a lounge with cable T.V., a reading room with daily newspapers and several magazine subscriptions, a back lawn with picnic tables and barbecue, and vending machines for snacks. Within a few steps of the college is the Principal's Lodge, a stately Victorian mansion and home of the Principal. Many of the college functions are held here in a warm and relaxed atmosphere.

Mailboxes and Lockers

At the front entrance of the college is the Front Desk. Here mail is sorted and distributed by the college receptionist. All students and residents have individual mailboxes.

Non-resident students of Wycliffe qualify for the use of small lockers. These are located in the basement and are available for a nominal fee. Contact the college receptionist for more information and availability.

Student Governance

The two student governments are the Student Council, which is elected by Professional Graduate Degree Students and by residents; and the executive of the Wycliffe Graduate Society, elected by Academic Graduate Degree Students. Fees are collected for these two organizations by the College.

The two student governments sponsor a variety of programs, including social events, intramural athletic activities, speakers, community discussions and outreach projects. They also appoint representatives to College, TST, and University committees, and act as a liaison between students and other constituencies of the College.

Founder's Chapel: The Word Endures

The Wycliffe community gathers daily for prayer in Founder's Chapel, to praise God, to pray for the world and to be formed by God's Word. Worship is at the center of all we do here. Worship is from the Anglican tradition but given our rich denominational breadth, we seek to be the universal church at prayer and song. Each week we have an evening service from another denominational tradition. Music is provided by both regularly scheduled musicians and students. The Chapel seeks to be the

universal church at song, thus different musical traditions are a part of our worship, including the Wycliffe Praise Band.

All M.Div. students are expected to be in Chapel once a day while on campus. All others are encouraged to take on this daily discipline. The Wycliffe Community gathers weekly for Holy Communion Wednesdays at 4:45 p.m., followed by Community Dinner. Children are most welcome to attend the service, or alternatively there is child-care provided during this service (in the Reading Room).

While Wycliffe is firmly rooted in its Anglican evangelical heritage, it prepares students to serve the whole church. Since many students serve multi-point parishes, where each might have a different worship tradition, it is our goal to both form students in Wycliffe’s Anglican evangelical tradition and also give them the ability to be at home and a leader in any worship style.

Preaching: Bishops, guests and faculty preach at the Wednesday Eucharists; faculty preach Thursday mornings, and students preach at various daily offices.

Chapel Schedule (Academic Year)

Monday-Friday:	Morning Prayer, 8:30 a.m.
Mon, Tue. Thur. & Friday	Evening Prayer 5:30 p.m.
Wednesday: Community Eucharist, with childcare,	4:45 p.m.
Tuesday:	Wine Before Breakfast 7:22 a.m. (Campus Chaplaincy)

Community Programs

Several opportunities are provided for fun and fellowship within the community, including the following:

The Fall Retreat

Students and their families are strongly encouraged to participate in a weekend retreat that takes place at the beginning of the fall semester. This event (which is partially subsidized by the College) affords opportunity for students and their families to enjoy a time of interaction, fun and spiritual refreshment in a natural setting.

Wednesday Dinners and other Special Meals

Students, along with spouses and children, are invited to a free community dinner that takes place immediately after Holy Communion on Wednesdays. Other special dinners and social events take place around Christmas, Homecoming (called the “At Home”) and Convocation.

Financial Assistance

Wycliffe offers an attractive program of financial support for those who qualify. There are scholarships and bursaries for both Basic and Advanced Degree students.
Professional Graduate Degree

STACKHOUSE SCHOLARSHIPS are available upon application to theological students who are studying in the ordination stream and are endorsed by a diocese of the Anglican Church. To qualify the student may also be receiving financial support from the diocese and/or parish. Provided that at least a B average is maintained, the \$4,000 scholarship will be paid each year of the three-year program.

All full-time Professional Graduate Degree students may apply for bursary assistance that is awarded based on financial need. Part-time students may also be eligible for some financial assistance.

In addition, there are a number of bursaries and scholarships donated in memory of people. An example of this is the **Vincent C. Nix Memorial Scholarship** established by Joan Nix to honour the memory of her father. The purpose of this scholarship of \$5,000 is to provide encouragement, recognition and assistance to those called to ordained ministry in the Anglican Church.

Application Forms are available on the Wycliffe website or may be obtained by request through the Wycliffe Admissions Office.

Academic Graduate Degree

Canadian Doctoral Full Tuition Scholarship

Established by the Wycliffe College Board, this award is available to any incoming Wycliffe College Doctor of Philosophy in Theological Studies student beginning in fall 2017 who is a Canadian Citizen, permanent resident or Protected Person, and who has demonstrated financial need. The award provides 100% tuition support for five years. As part of the award, there is an expectation that at least a three -term teaching assistantship will be undertaken by the recipient of this award after the completion of all course work. Applications will be judged on the basis of academic excellence, the significance of the student's intended research, and the student's demonstrated financial need. The deadline for applications is February 15 each year. Further details are available on our website.

Thompson Doctoral Fellowship

One Thompson Fellowship is awarded each year to an entering student. It has a value of \$12,500 per year, and the tenure of the award is three years. Selection criteria include academic strength, Christian character and record of Church involvement, and potential for service to the Church and to Christian scholarship. An applicant must also be in sympathy with the theological commitments of the College as expressed in its Six Principles and must demonstrate financial need. It is the College's intention that, in the group of three Thompson Fellows at any one time, a woman, an Anglican, and a Wycliffe graduate will be represented. (More than one of these categories can be represented by a single Fellow.) To be considered, a student must have been accepted by the Toronto School of Theology as a candidate for a doctoral degree, enrolled through Wycliffe College. Applications are due February 15 of each year for applicants entering in the following September. The application requires the following documentation from the candidate:

1. a letter requesting to be considered;
2. financial disclosure, on the form authorized by the College bursary committee;
3. a statement setting out, quite specifically, the applicant's purposes in pursuing doctoral studies, the nature of the proposed field of study, the likely topic of the thesis, and the potential significance of this topic for Christian scholarship and for the life and mission of the Church;
4. one non-academic reference from a member of the clergy or another church leader, sent directly by the referee to the College director of advanced degree studies. Materials forming

part of the candidate's application for admission to the TST, such as personal information and transcripts, will also be consulted. An announcement is normally made during the week of March 1. Thompson Fellows in their second and third years are required to permit their name to stand for the position of coordinator of the Wycliffe Graduate Society (WGS).

Weston Family Doctoral Entrance Scholarship

Through the generosity of the W. Garfield Weston Foundation, \$12,000 is awarded each year to one student or may be shared equally between two students. The award is for five years as long as a student maintains academic standing.

Within this commitment, the recipient will be expected to fulfill a teaching assistantship each year following completion of the coursework portion of the program. Selection criteria are academic strength (as indicated by marks in previous academic work, by references, and by the statement of academic interest submitted in the application for admission to TST, or another statement submitted in its place), Christian character and record of Church involvement, and potential for service to the Church and to Christian scholarship. An applicant must also be in sympathy with the theological commitments of the College as expressed in its Six Principles and must demonstrate financial need. Prospective students wishing to be considered for the scholarship must complete and submit the financial disclosure form authorized by the College bursary committee by February 15 before the September of entrance. Submission of this form will constitute application for the Weston Doctoral Entrance Scholarship. Materials forming part of the candidate's application for admission to the TST, such as personal information and transcripts, will also be consulted.

Doctoral bursaries

The College hopes to support every doctoral student demonstrating financial need with a bursary of at least \$6,000 for the first five years of the program.

Teaching assistantships

Every year the College awards several teaching assistantships for courses in the basic degree curriculum. The number of assistantships depends on the number of courses requiring a teaching assistant. Duties are assigned by the professor to whom the TA is assigned, not to exceed ten hours a week. Duties typically include marking academic exercises such as essays and quizzes, leading seminars, tutoring, and lecturing. A TA for one course for one semester receives a stipend of \$3,000 (unless it is a part of their financial package as detailed in their offer letter). TA's may be appointed for two semesters and therefore receive a stipend of \$6,000. A "full" (two-semester) TA is not eligible for additional bursary. As a rule, only students who have successfully completed the coursework stage of their doctoral studies are eligible for appointment as a TA.

DMin entrance scholarships

Established by the Board of Wycliffe College, this award will normally be awarded annually to a Wycliffe Doctor of Ministry (D. Min.) student, accepted by T.S.T., and beginning their program in April of each year, who has demonstrated financial need. The award provides \$3,000 per year tuition support for five years. Applications will be judged on academic excellence, the significance of the student's intended research and the student's demonstrated financial need.

Other bursaries

Students in the Th.M. and M.A. programs may apply for financial assistance to the College bursary committee.

Government Scholarships

A student who accepts an Ontario Graduate Scholarship or a Social Sciences and Humanities Research Council doctoral fellowship must resign his or her College fellowship, scholarship, or bursary. In the case where a student receives an OGS award, the College will make its required institutional contribution. The College may make a similar requirement of a student who receives substantial extra-provincial, foreign, or foundation funding.

Ontario Residence

Part of the College's endowment for financial assistance has been provided by the Ontario Student Opportunity Trust Fund, which requires beneficiaries to be residents of Ontario. The College will therefore ensure that every year an amount of financial aid (including fellowships, scholarships, and bursaries) at least equal to that derived from the OSOTF is awarded to legal residents of Ontario. (In order to be a legal resident of Ontario, one must be a legal resident of Canada, and one of the following should be applicable:

- lived in Ontario for at least 12 months in a row up to the beginning of full-time post-secondary studies; **or**
- a spouse has lived in Ontario for at least 12 months in a row up to the beginning of the current academic year (and was not enrolled in full-time post-secondary studies in that period); or,
- parent(s), step-parent(s), legal guardian(s), or official sponsor(s) have lived in Ontario for at least 12 months in a row up to the beginning of the current study period.

Government Assistance Programs

OSAP (Ontario Student Assistance Program)

Financial support is provided to qualified students who are Canadian citizens or qualified residents of Ontario. This is in the form of a Canada Student Loan and/or an Ontario Student Loan. (Non-residents of Ontario are eligible for Canada Student Loans through their home province.) The amount of loan that may be received is based on calculated financial need. It is recommended that returning students apply for O.S.A.P. assistance by May 31 and that new students apply by June 30. Apply online at www.osap.gov.on.ca.

The Bursary for Students with Disabilities

The Bursary for Students with Disabilities, funded by the federal and provincial governments, provides non-repayable assistance of up to \$5,000 to full-time O.S.A.P. recipients and \$2,000 to part-time O.S.A.P. recipients who have special educational expenses as the result of a disability. Information and applications are available from the Office of Admissions and Awards, U of T, 172 St George Street, Toronto ON M5R 0A3, phone (416) 978-2190.

SSHRC Doctoral Fellowship

(Social Sciences and Humanities Research Council of Canada) Qualified advanced degree students are urged to apply for SSHRC Scholarships. Financial support is available to Canadian citizens and permanent residents based on academic standing and letters of recommendation. Application forms are available in early fall from the Toronto School of Theology Advanced Degree Office.

Ontario Graduate Scholarship

Students in the Th.M. or conjoint doctoral programs are eligible to apply for an OGS award. It is open to Canadian citizens, permanent residents, and students admitted to Canada with a student visa. For information and application deadlines see the website: <https://osap.gov.on.ca/OSAPPortal/en/A-ZListofAid/PRDR015090.html>.

Special Opportunity Grants for Female Doctoral Students

Special Opportunity Grants for Female Doctoral Students of up to \$3,000 per year are available through the federal government to reduce the debt load of student loan recipients. Further information and application forms are available from Enrolment Services, U of T, 172 St George Street, Toronto, phone (416) 978-2190.

Bursaries Granted by Other Bodies

The Anglican Foundation of Canada

The Foundation now administers all national bursary funds formerly available through various departments of the Anglican Church of Canada. The General Bursary Trust is available to help support the theological education and training of men and women for ordained ministry. Candidates must show ACPO recommendation or an officially approved alternative evaluation procedure. The Graduate Award Trust helps support post-graduate studies (Ph.D.) of qualified clergy and laity who plan to pursue an academic career. Applications: Business Director's office or The Anglican Foundation of Canada, 80 Hayden Street, Toronto, Ontario, M4Y 3G2. Deadline for applications is mid-April.

Anglican Church Women (Diocese of Toronto)

Women candidates for the Diocese of Toronto may be eligible for a bursary of up to \$1,000. Applications are available from the Anglican Church Women, Diocese of Toronto, 135 Adelaide Street East, Toronto, Ontario, M5C 1L7. Applications are reviewed monthly.

A .C . McCollum Assistance Fund, St. John's, York Mills

At the invitation of St. John's Church, students studying for ministry in the Church and who require financial support may apply for assistance. The fund may not be available every year for this purpose. Applications are available from the Wycliffe Business Director's office.

Diocesan Bursaries

Dioceses and Anglican colleges in the Ecclesiastical Province of Ontario share a joint bursary application form. When a student applies for a College bursary, a copy of their application is forwarded to their diocese if requested. Students in other dioceses apply to their bishop.

Ellen Knox Scholarship

Anglican students preparing for ministry in the Anglican Church of Canada are invited to apply for this scholarship. The applications are available in early fall from the Wycliffe Business Director's office before the Oct. 31 deadline.

The Ivor Norris Bursary

Awarded by the Anglican Ordinariate of the Canadian Forces to applicants who have a personal connection to the Canadian Forces through personal military service (past or present), being married to or the child of someone with such service. Applicants must be sponsored by a bishop for ordination within the Anglican Church of Canada and enrolled in full-time theological studies. Applications are available from the Wycliffe Business Director's office.

The Leonard Foundation Financial Assistance Program

This program is intended for M.Div. students in need of financial assistance. Deadline for applying is March 15. Download the application from: www.leonardfnd.org.

Parochial Grants

Parishes may make some provisions for the financial support of their members who are preparing for ordination. Candidates should consult their respective rectors or church wardens.

Prayer Book Society of Canada, Toronto Branch

The Toronto Branch of the Prayer Book Society invites students to apply for a bursary in early fall. Requirements of application are available from the Wycliffe Business Director's office. Deadline is October 31.

Evelyn Florence and William Leonard Prideaux Award

This award is intended for a Canadian Inuit or Aboriginal former boy scout from the North West Territories or Moosonee area. To apply, contact the Wycliffe Business Director's office. Notices of these and additional awards are posted, as received, in Wycliffe's weekly Morning Star publication. Please note application deadlines.

Other sources of funding

- The Toronto School of Theology offers scholarships and bursaries for Graduate Degree students, including Doctor of Ministry students. See the following website for more information and applications: <http://www.tst.edu/academic/scholarships-and-bursaries>.
- Association of Theological Schools: <http://www.ats.edu/resources/funding-opportunities>
- The Fund for Theological Education: <http://fteleaders.org/grants-fellowships>
- Scholar Leaders Org. For graduate students from Africa, Asia, Central and Eastern Europe, Latin America, and the Middle East <https://www.scholarleaders.org/>
- Langham Partnership for students from majority world <https://ca.langham.org/>

Important information for new students from the United States of America

The US Department of Education (USDE) has determined that the University of Toronto, which until now has been authorized to confirm your enrolment, can no longer report academic registration for TST students. Also, no TST member college has been recognized by the USDE for this purpose. New US Direct Loans can no longer be made to TST students, and existing loans are subject to repayment.

To aid in your financial planning, you should consider alternative sources of funding, for example from your preferred lender, or the Smart Option Loan through Sallie Mae. Or, if you are a Canadian

citizen or permanent resident, you may apply through the Canadian government student loan system. It should be noted that neither the University of Toronto nor TST endorses any of these alternative sources of funding. If you are a student who holds a US Direct Loan from previous academic sessions, you should be aware that the US Department of Education (USDE) has determined that the University of Toronto, which until now has been authorized to confirm your enrolment, can no longer report your academic registration. Also, no TST member college has been recognized by the USDE for this purpose. Therefore, your enrolment cannot be officially confirmed. New US Direct Loans can no longer be made to TST students, and existing loans are subject to repayment. If you are one of these students, you will be expected to begin repayment sometime around March 2019. If you need financial help during repayment (e.g., you can't make your loan payments because you're still in school and have no income), then there are a number of repayment programs available through the USDE that you can pursue, including a program called forbearance. Information about repayment can be found at <https://studentloans.gov>. You may wish to contact your college financial aid officer for further advice, but the responsibility for repayment or forbearance lies with the student.